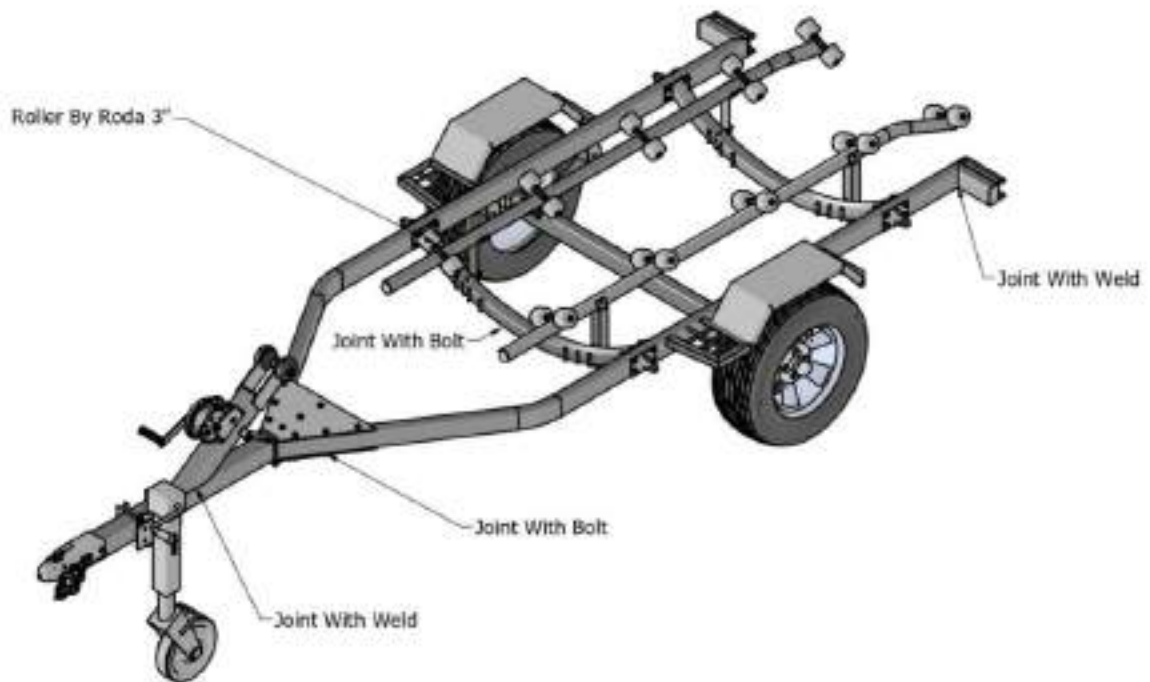
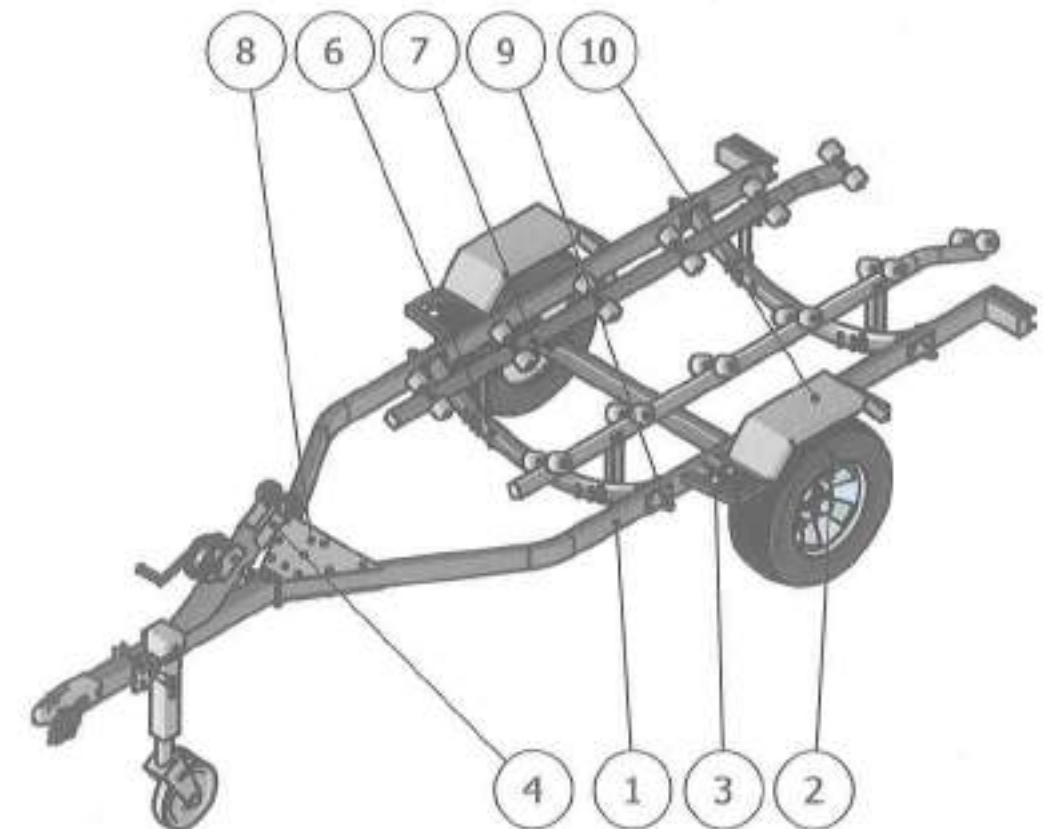
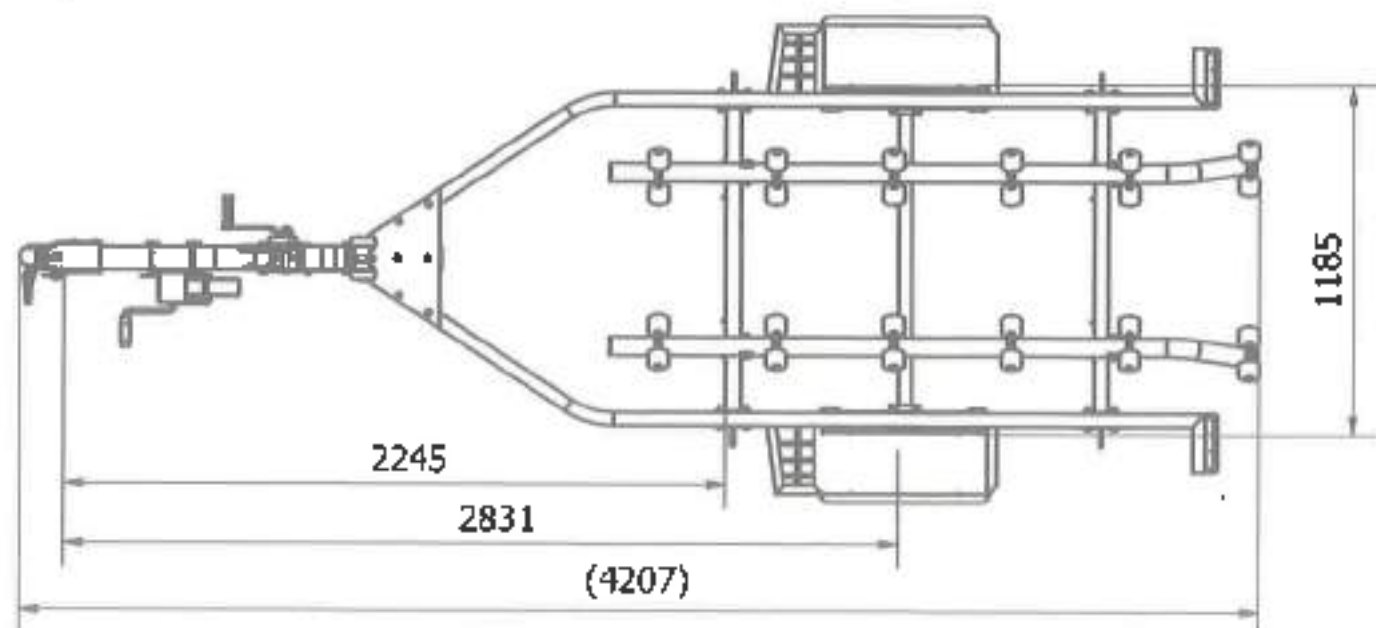
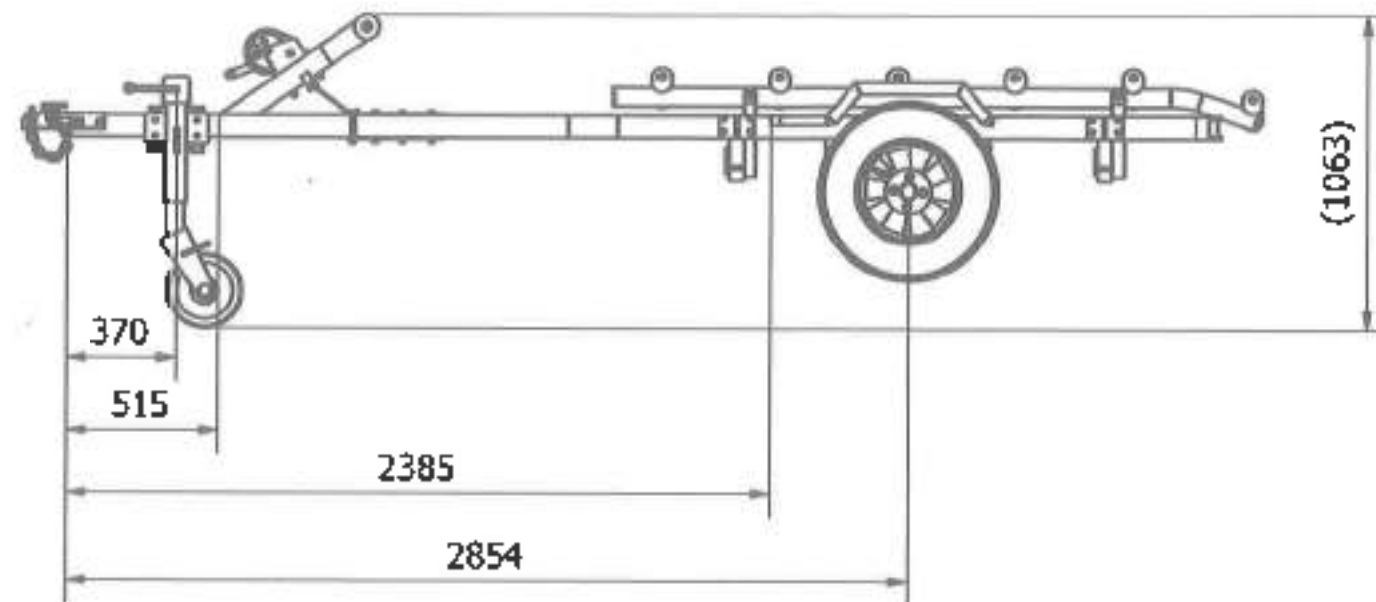
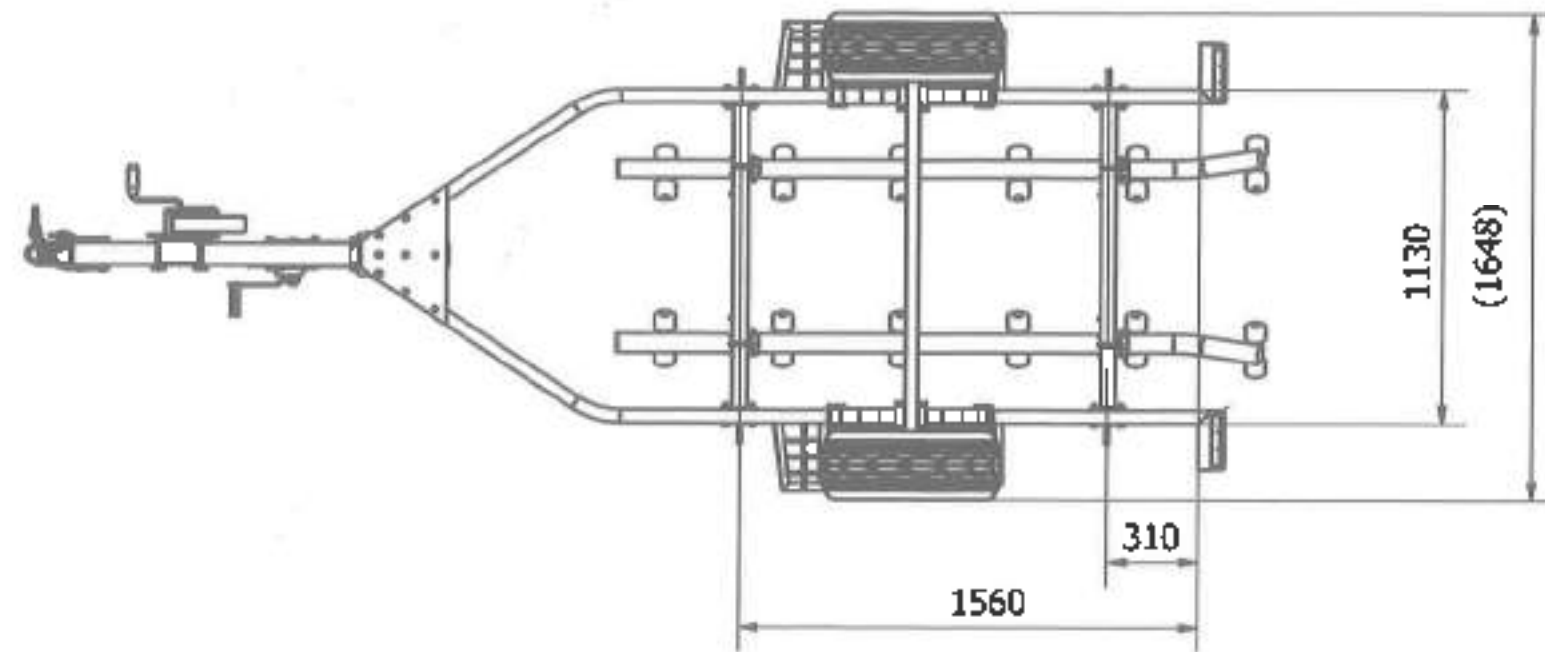


### Deskripsi Trailer Jetski Dengan Roller

*Trailer Jetski* dengan *Roller* merupakan desain baru dari *Trailer* sebelumnya. Kelebihan *trailer* ini dilengkapi dengan *roller* yang berguna untuk memudahkan pergerakan *Jetski* diatas *Trailer*. Selain itu, desain baru ini memberikan efek kualitas pada *Jetski* untuk melindungi cacat dekok pada *Body Jetski*. Secara keseluruhan, sistem perakitan pada *Jetski* ini menggunakan pengelasan penuh. Material pada *Jetski* ini rata rata menggunakan material baja. Roda *roller* yang digunakan berjumlah 20 roda dengan material *polyuretane*. Kelebihan *Trailer Jetski* dengan *Roller* ini jika ada masalah pada sambungan, baut dapat dilepas tanpa merusak material disekitarnya.





10	Wheel Cover	Plat Galvanis	723x283x3	2	R&L
9	Side Hasp	Sub Assy - 09	120x75x73	4	R&L
8	Rectangular Frame	Sub Assy - 08	475x300x85	1	
7	Frame Roller	Sub Assy - 07	2207x200x406	2	R&L
6	Under Frame	Sub Assy - 06	1040x120x220	2	
5	Bracket Roller	Sub Assy - 05	95x66x285	4	R&L
4	Barrier	Sub Assy - 04	213x150x86	1	
3	Frame Swing	Sub Assy - 03	230x190x30	4	R&L
2	Wheels	Sub Assy - 02	Ø608x1640	1	
1	Main Frame	Sub Assy - 01	3915x1440x32 8	1	
0	Trailer Jetski		1207x1648x1063	1	
No	Description	Material	Dimension	Qty	Remark

Scale	1 : 20	Hard	Roughness	Checked	Approved
Finish		HRC	(✓) ✓	Yuni	Herry
Tolerance			Proj. Amerika	Designed	Drawn
No.	Rev	Date	Sign		
Asbur	05-03	3-6	30-120	10-111	JIS-10K
Time	±0.05	±0.05	±0.1	±0.5	±1.2
Knuckle	±0.1	±0.3	±0.2	±0.3	±0.5
Rough	±0.15	±0.2	±0.5	±0.8	±1.2

**ASTRAtch**  
member of ASTRA

**Trailer Jetski**  
General Assy

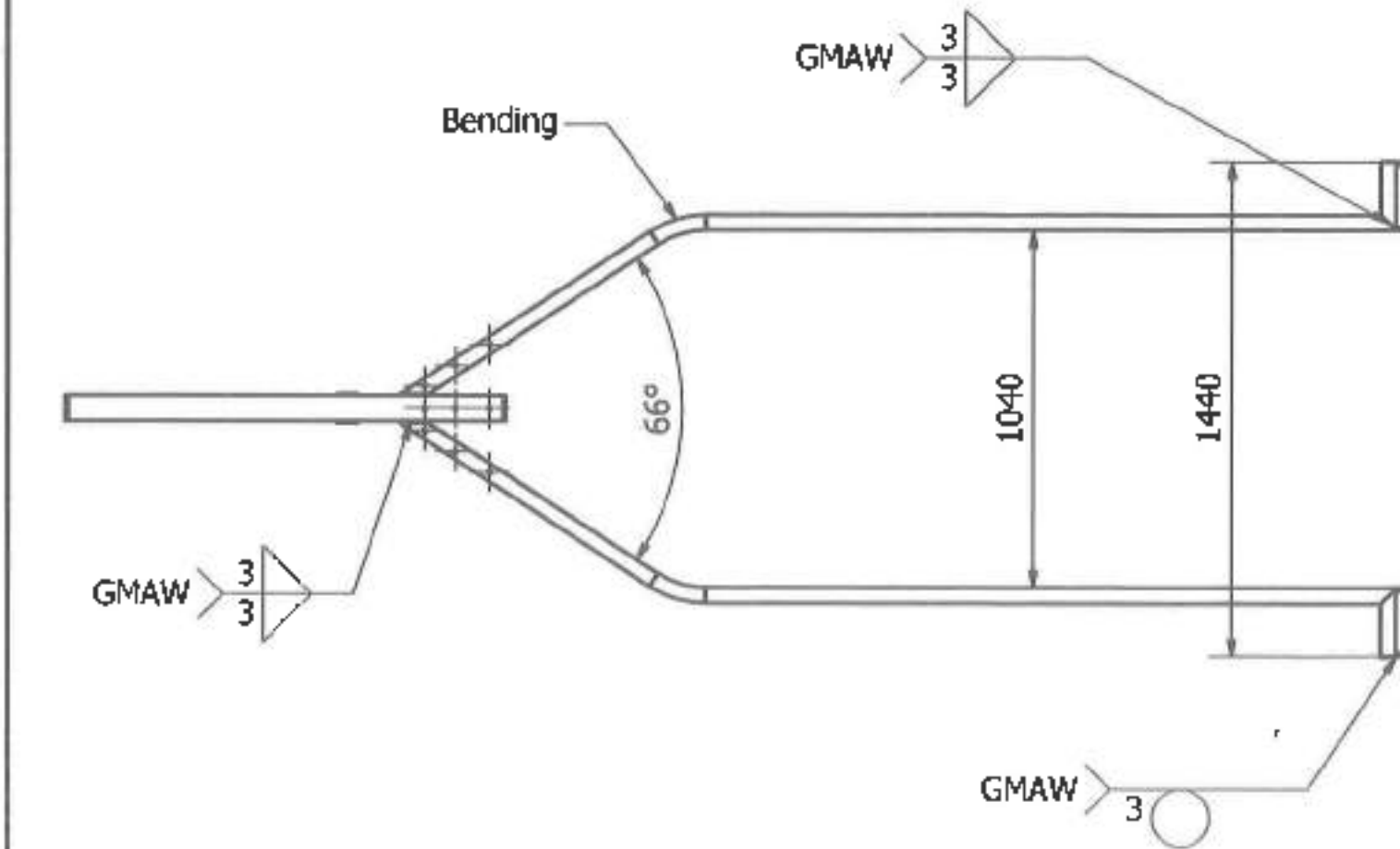
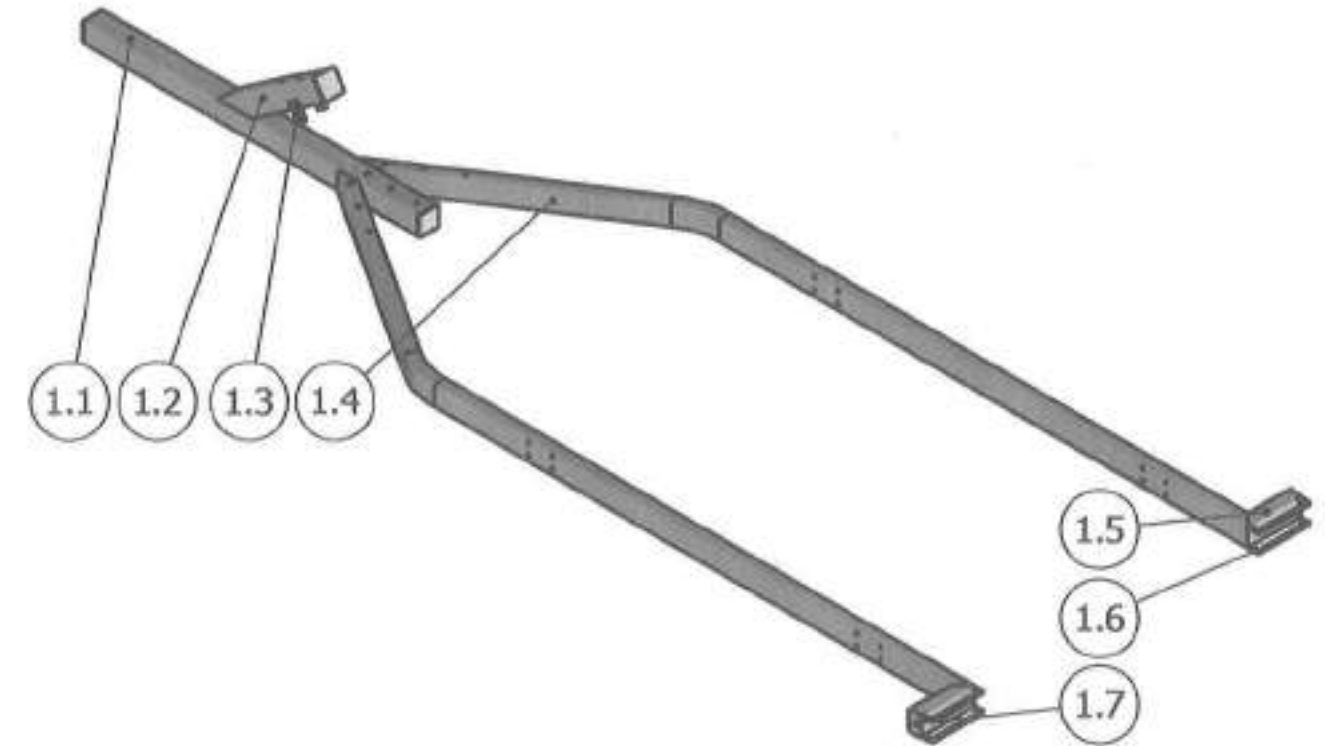
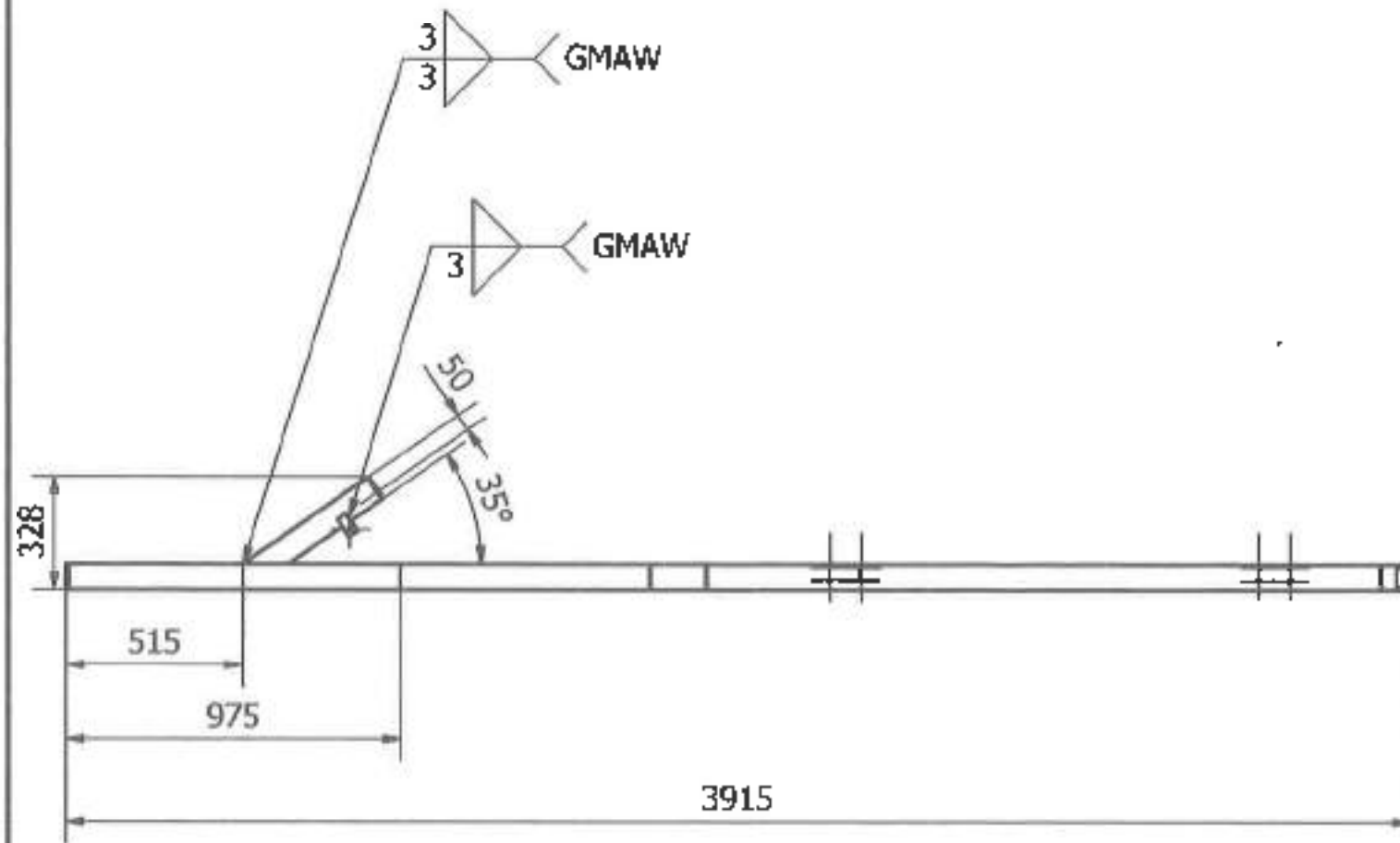
Asby no. \_\_\_\_\_  
Dwg no. **23-P02-TJ-GA-00**

No order : \_\_\_\_\_  
Origin : \_\_\_\_\_

Delivered all sharp edge 0.3

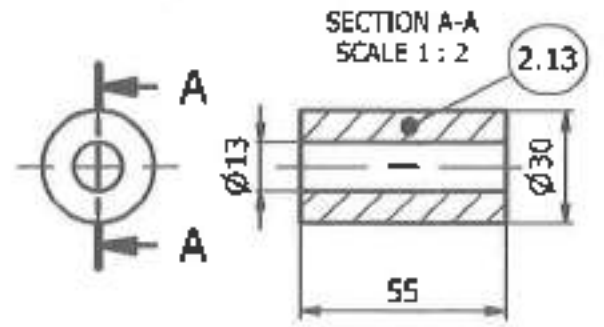
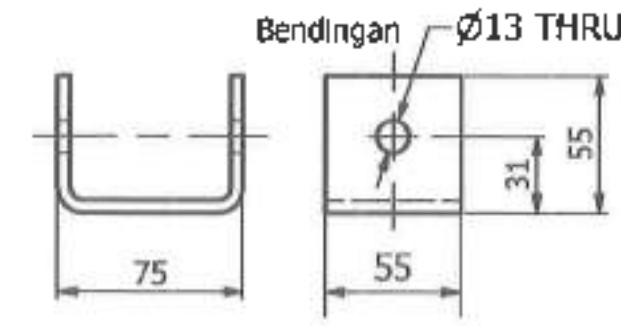
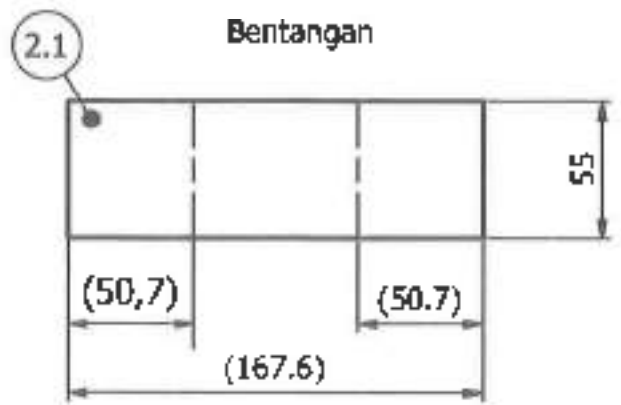
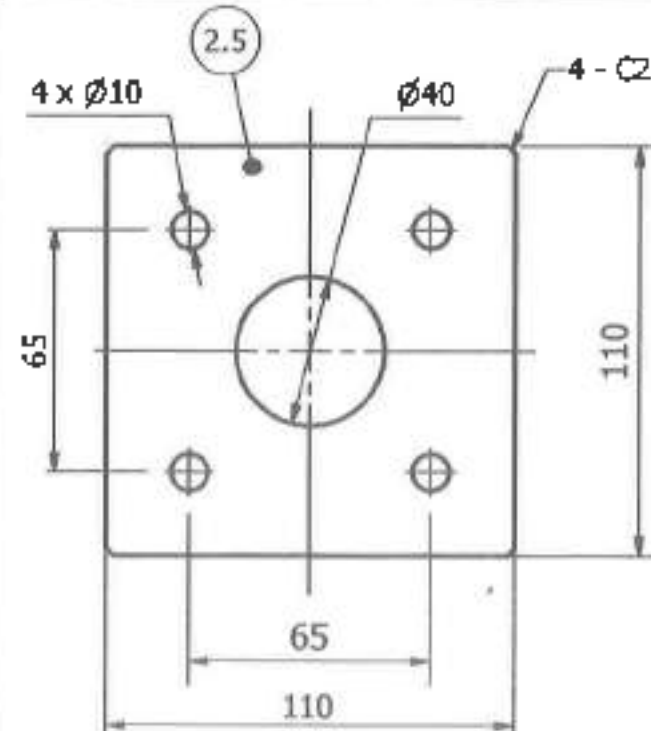
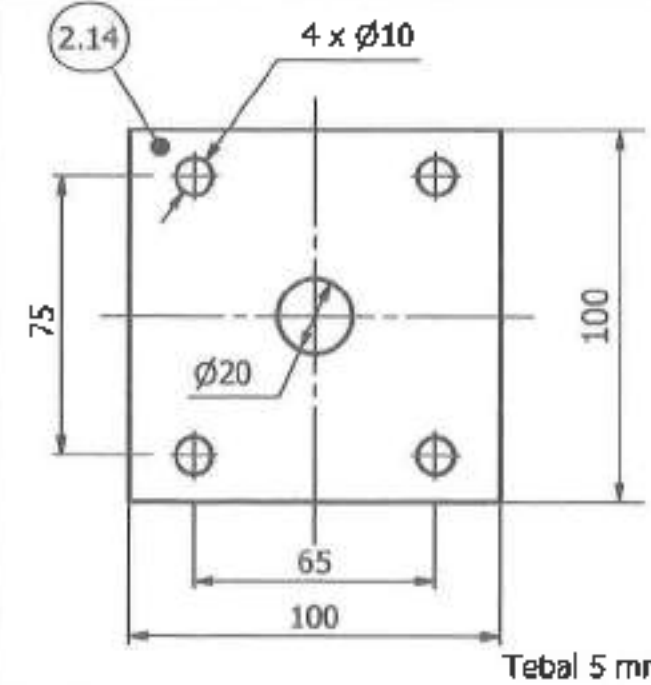
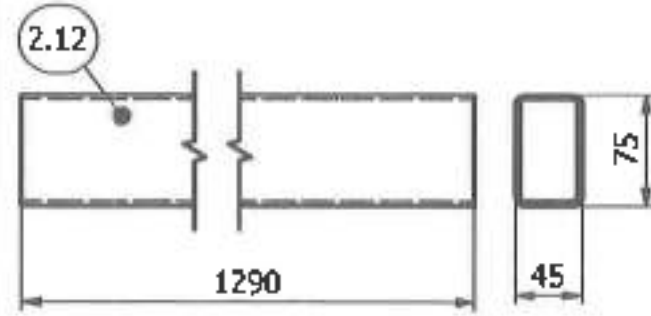
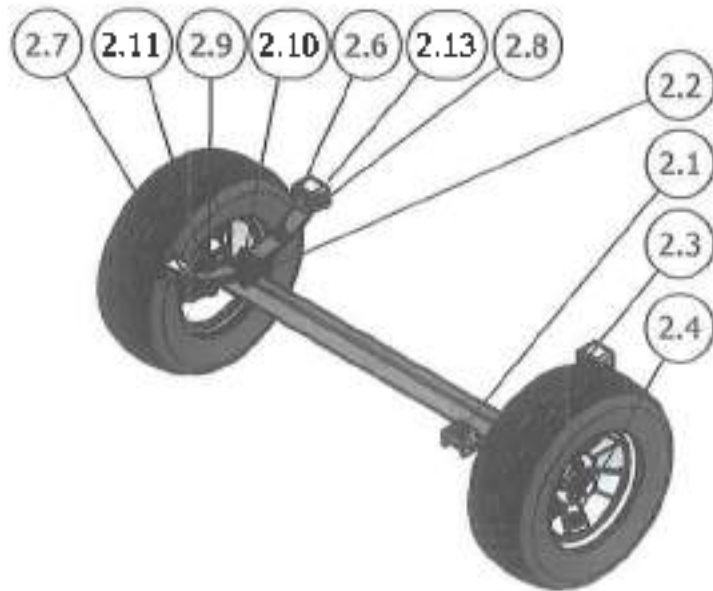
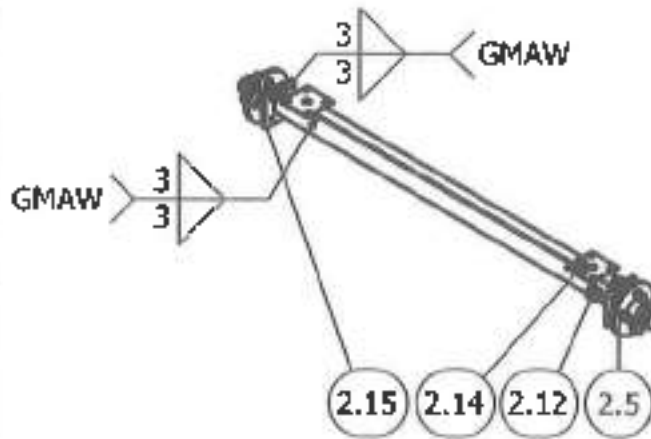
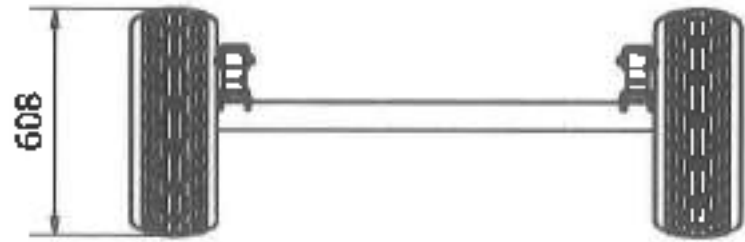
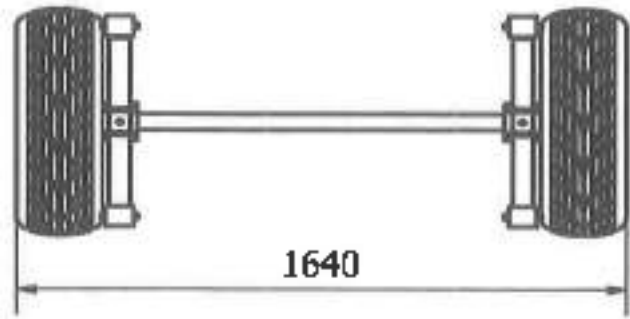
**A3**

1 of 1



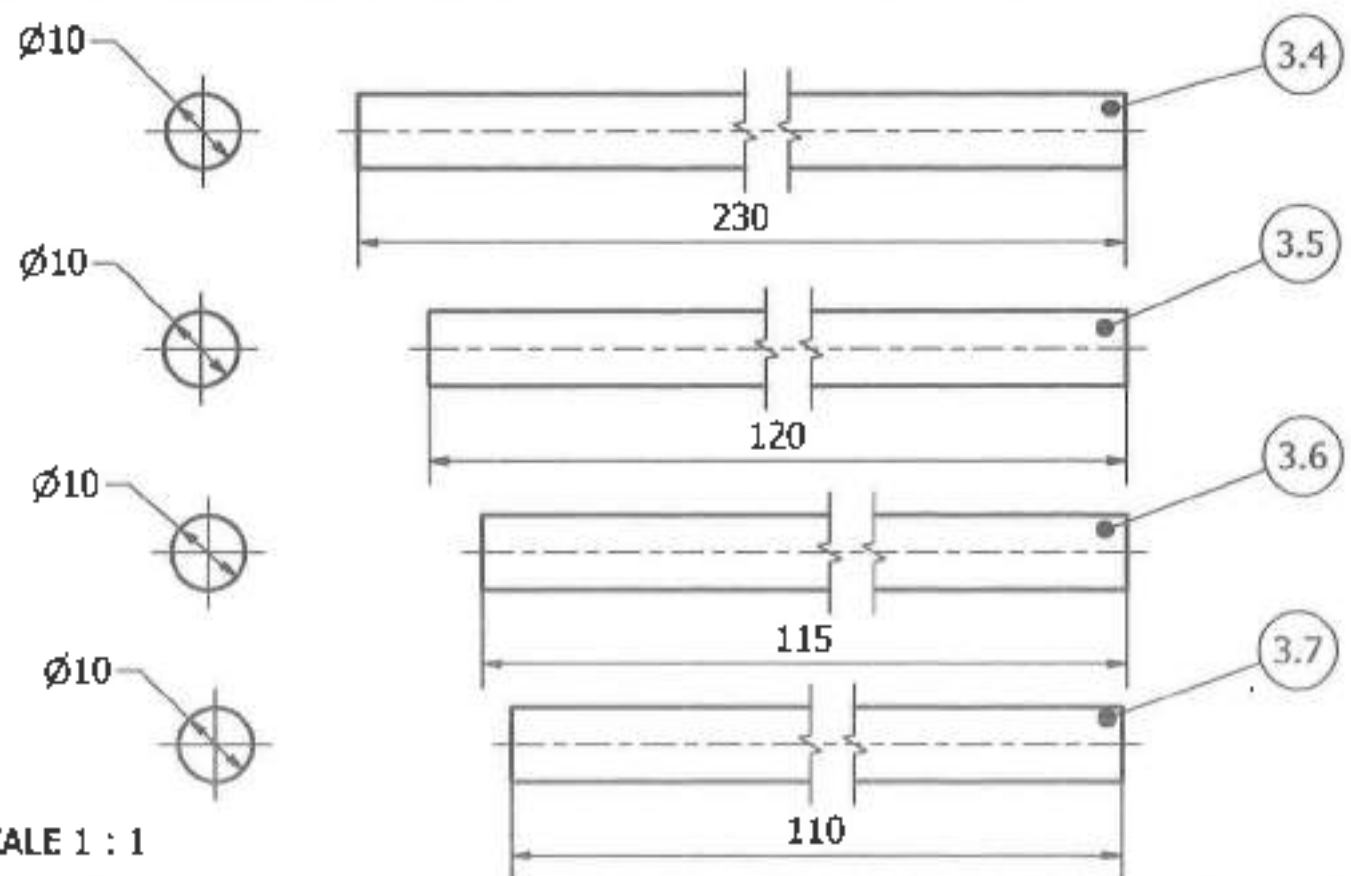
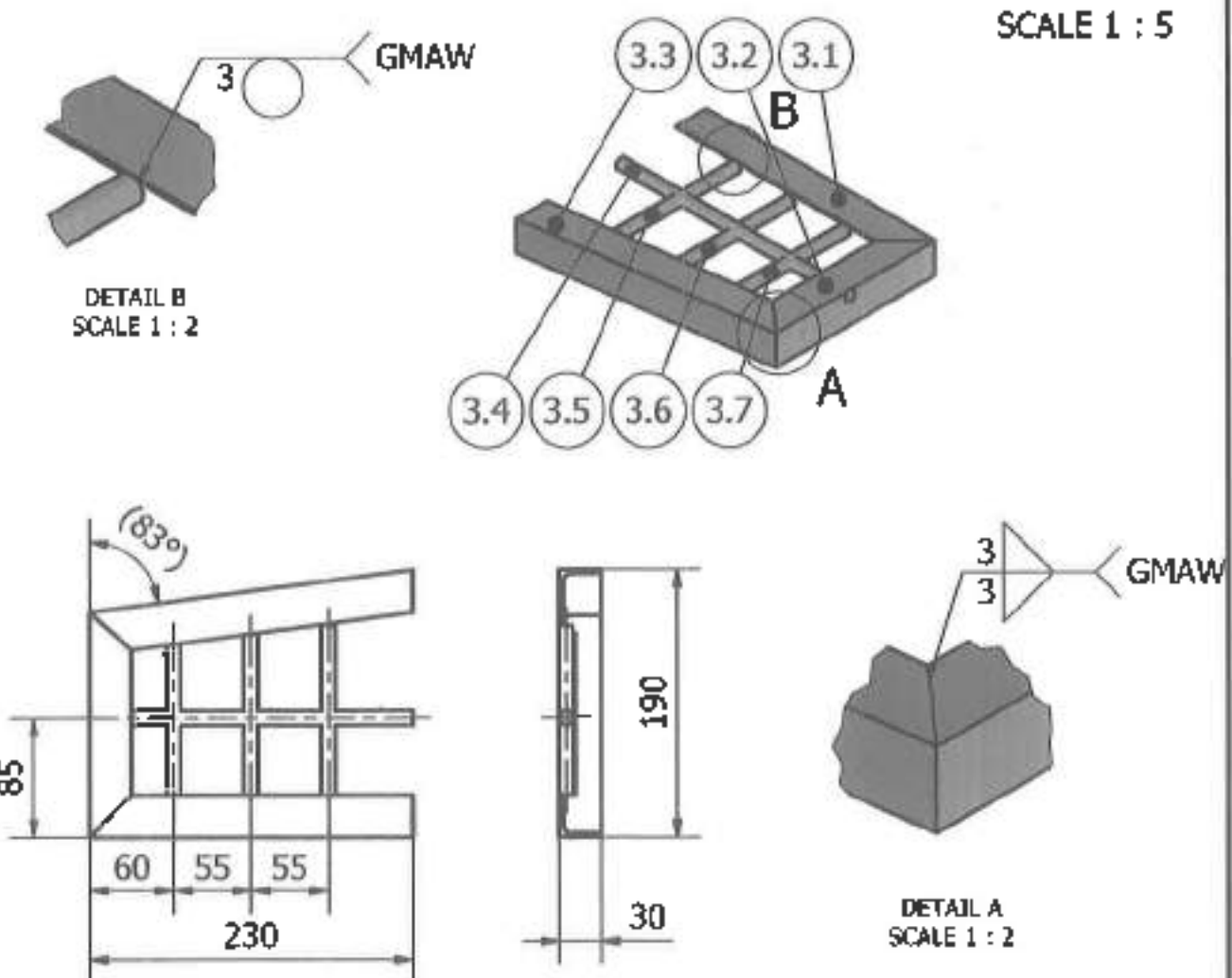
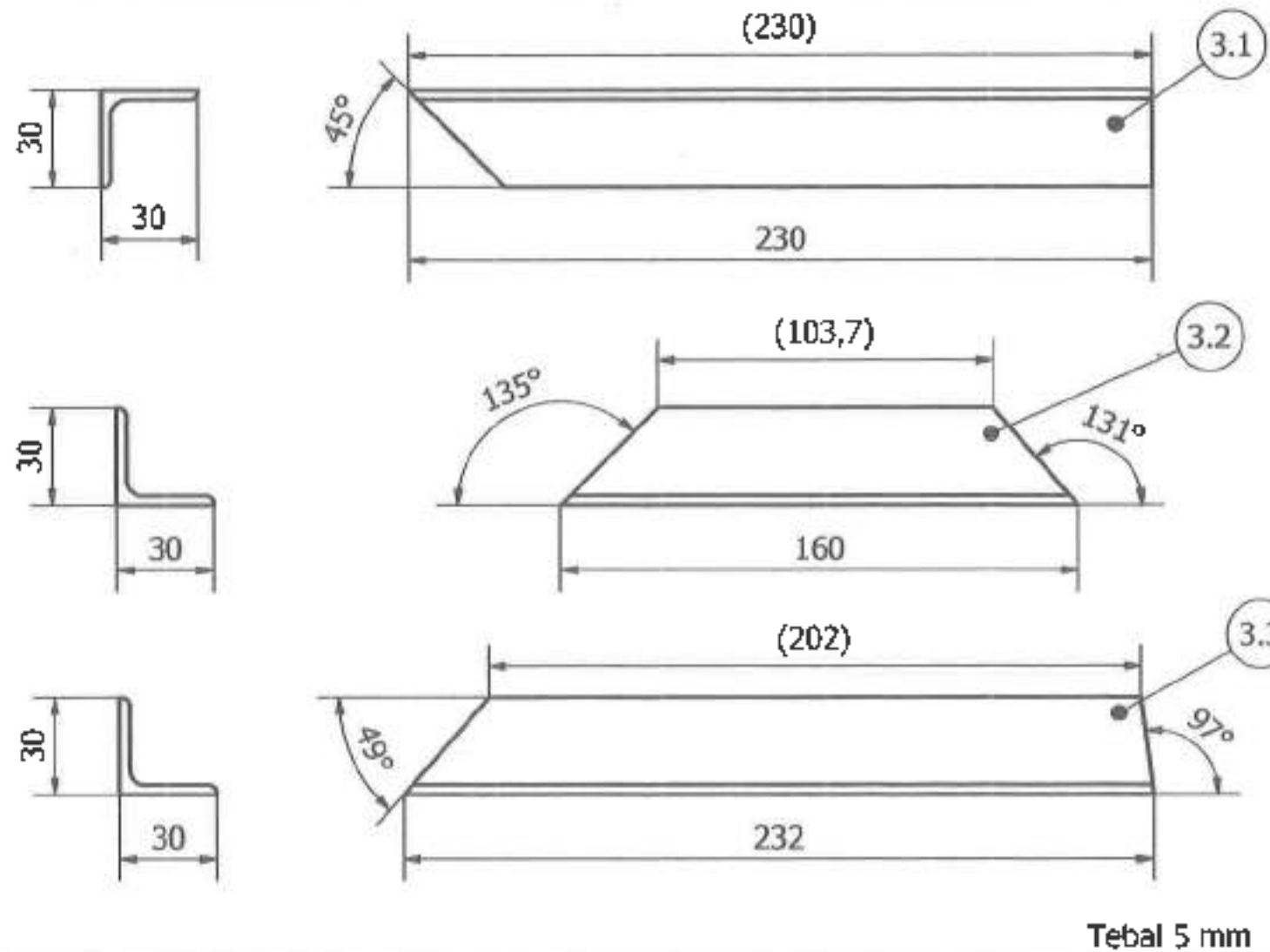
1.7	Cover Frame Hollow	Plat Galvanis 2mm	75x45x2	5	
1.6	Lamp Cover	Behel Galvanis	Ø10x270.5	4	
1.5	Base Lamp	Hollow Galvanis 75x45x3	45x75x200	2	R&L
1.4	Side Frame	Hollow Galvanis 75x45x3	45x75x3042	2	R&L
1.3	Support Plate	Plat Galvanis 2mm	60x30x5	2	
1.2	Base Hand Winch	Hollow Galvanis 75x75x3	75x75x440	1	
1.1	Center Frame	Hollow Galvanis 75x75x3	75x75x1270	1	
1	Main Frame		3915x1440x328	1	
No	Description	Material	Dimension	Qty	Remark
Scale	1 : 20	Hard	Roughness	Checked	Approved
Finish	Welding	HRC	(✓)✓	Yuni	Herry
Tolerance			Proj. Amerika	Designed	Drawn
			⊕ □	Peter	Wahyu
No.	Revisi	Date	Sign		
AC/Ur	0.5 - 3	2 - 4	30-120	100-150	100-200
Fine	±0.05	±0.05	±0.1	±0.15	±0.2
Middle	±0.1	±0.1	±0.2	±0.3	±0.5
Rough	±0.15	±0.2	±0.5	±0.8	±1.2
Title: <b>ASTRAtech</b> member of ASTRA <b>Main Frame</b> Trailer Jetski					
Assy no. 23-P02-TJ-GA-00			Dwg no. 23-P02-TJ-SA-01		
No order :				Origin :	
Debured all sharp edge 0.3				A3	
1 of 1					





2.15	Axle Hub and Stub_SQ 40x40_45	Standar part	40x40x45	2	
2.14	Bracket U bolt	Sheet Metal 5mm	100x100x5	2	
2.13	As Per Daun	SS41	Ø30x55	4	
2.12	Frame As Wheels	Hollow Galvanis 75x45x3	1290x45x75	1	
2.11	ISO 4017 - M8 x 20	Bolt M8 x 20	M8 x 20	8	
2.10	ISO 4017 - M8 x 30	Bolt M8 x 30	M8 x 30	2	
2.9	ISO 4032 - M8	Standar Part	Nut M8	18	
2.8	ISO 4032 - M12	Standar Part	Nut M12	4	
2.7	ISO 4762 - M12 x 90	Bolt M12 x 90	M12 x 90	4	
2.6	Per Daun	Standar part	500x55x131	2	
2.5	Plat As Wheels	Sheet metal 5mm	110x110x5	4	
2.4	Rim R14x5.5JJ(0)4-100	Rim R14 x 5,5	R14 x 5,5	2	
2.3	Tire 175x65 R14	Standar part	175x65 R14	2	
2.2	U BOLT FRAME	M10x75x55	M10x75x55	4	
2.1	U Plate	Plat Galvanis 3mm	168x55x3	4	

2	Wheels		Ø608x1640		
No	Description	Material	Dimension	Qty	Remark
Scale	1 : 20	Hard			
Finish		Roughness			
Tolerance		HRC			
		Proj. Amerika			
		Checked	Approved		
		Yuni	Herry		
		Designed	Drawn		
		Peter	Wahyu		
		ASTRA polytechnic member of ASTRA		Title: Wheels Trailer Jetski	
		Assy no. 23-P02-TJ-GA-00		Dwg no. 23-P02-TJ-SA-02	
		No order :		Origin :	
		Deburred all sharp edge 0.3		A3	



3.7	ISO 1035/1 - 10 - 110	Behel Galvanis	Ø10x110	2	
3.6	ISO 1035/1 - 10 - 115	Behel Galvanis	Ø10x115	2	
3.5	ISO 1035/1 - 10 - 120	Behel Galvanis	Ø10x120	2	
3.4	ISO 1035/1 - 10 - 230	Behel Galvanis	Ø10x230	2	
3.3	ISO 657-1-L30x30x5-232	Siku Galvanis L30x30x5	232x30x30	2	R&L
3.2	ISO 657-1-L30x30x5-160	Siku Galvanis L30x30x5	160x30x30	2	R&L
3.1	ISO 657-1-L30x30x5-230	Siku Galvanis L30x30x5	230x30x30	4	R&L
3	Frame Swing		230x190x30	2	
No	Description	Material	Dimension	Qty	Remark
Scale	1 : 2	Hard	Roughness	Checked	Approved
Finish	Welding	HRC	(✓)✓	Yuni	Herry
Tolerance			Proj. Amerika	Designed	Drawn
No.	Revisi	Date	Sign	Peter	Wahyu
Accur	±0.1	±0.05	±0.1	±0.15	±0.2
File	±0.1	±0.1	±0.2	±0.3	±0.5
Middle	±0.1	±0.1	±0.3	±0.5	±1.2
Rough	±0.15	±0.2	±0.5	±1.2	±3
ASTRAtech			member of ASTRA		
Title			Frame Swing		
			Trailer Jetski		
Assy no.			23-P02-TJ-GA-00		Dwg no.
					23-P02-TJ-SA-03
No order :			Origin :		A3
Deburred all sharp edge 0.3			1 of 1		

SCALE 1 : 1

SCALE 1 : 5

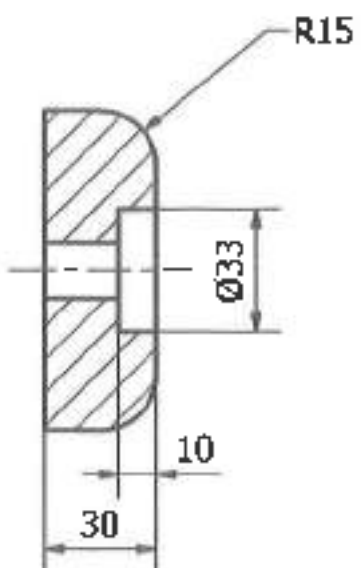
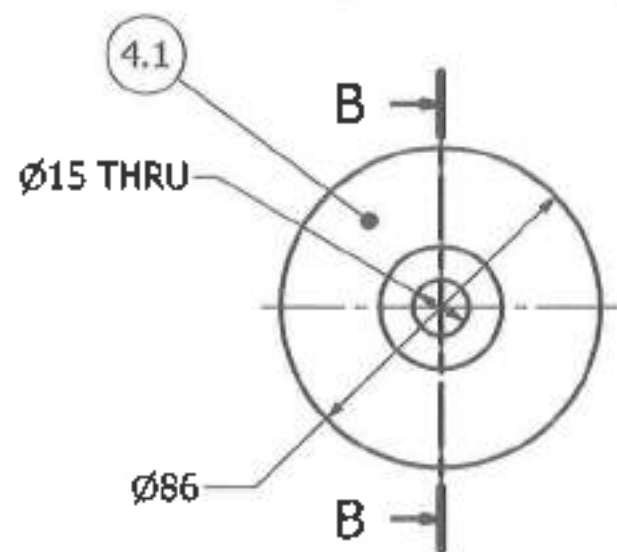
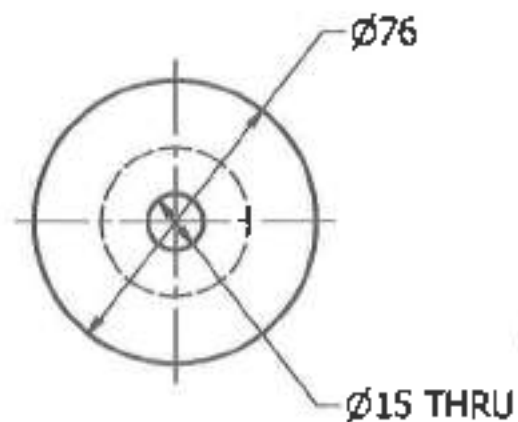
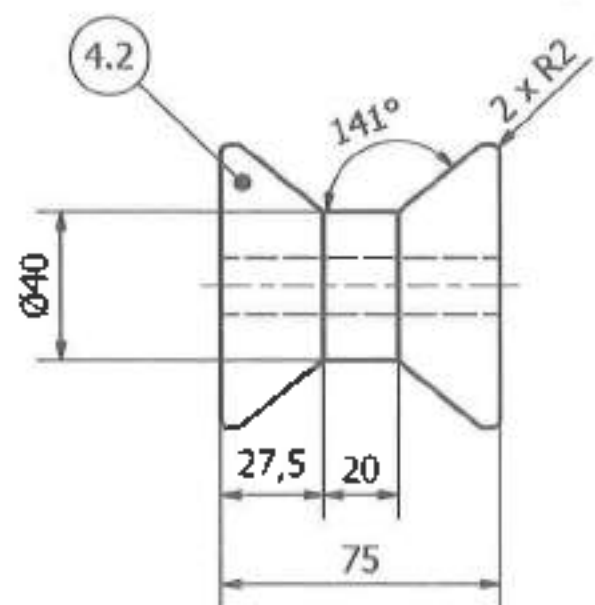
DETAIL B  
SCALE 1 : 2

DETAIL A  
SCALE 1 : 2

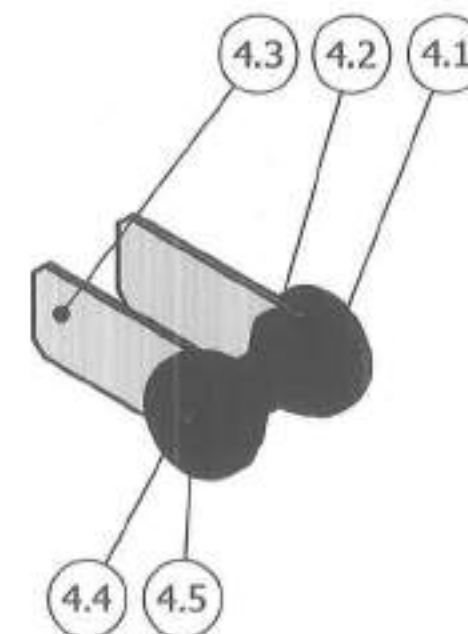
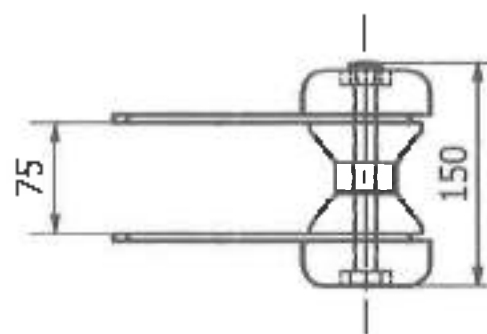
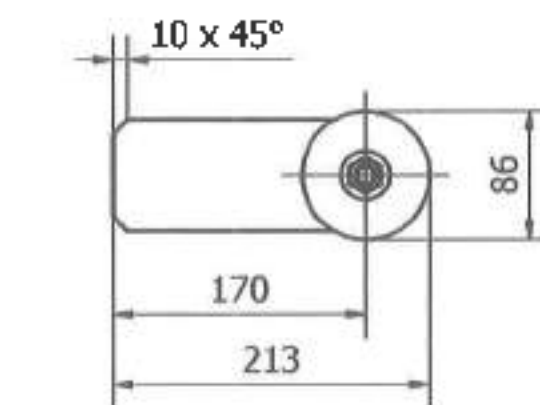
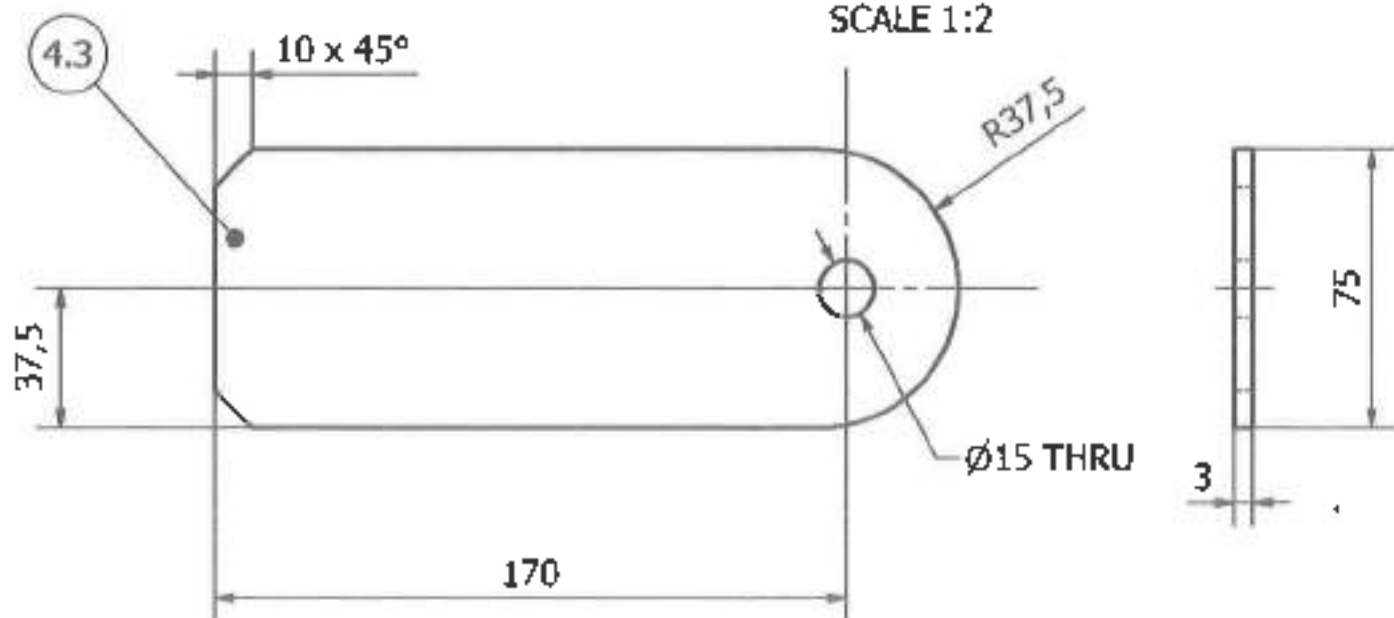
Tebal 5 mm



SCALE 1 : 2



SECTION B-B  
SCALE 1:2



4.5	SS ISO 4033 - M14	Nut Galvanis M14	M14	1	
4.4	ISO 4017 - M14 x 140	Bolt Galvanis M14x140	M14x140	1	
4.3	Plat Roller	Plat Galvanis 3mm	207,5x75x3	2	
4.2	Roller Tengah	Polyuretane	Ø76 x 75	1	
4.1	Roller Samping	Polyuretane	Ø86 x 30	2	
4	Barrier		213x150x86	1	
No	Description	Material	Dimension	Qty	Remark

Scale	1 : 5	Hard	Roughness	Checked	Approved
Finish	Turn	HRc	(✓)✓	Yuni	Herry
Tolerance			Proj. Amerika	Designed	Drawn
No.	Revisi	Date	Sign	Peter	Wahyu
Accur	0.1-0.3	0.4-0.6	0.7-0.9	1.0-1.2	1.3-1.5
Fine	±0.05	±0.08	±0.1	±0.15	±0.2
Middle	±0.1	±0.15	±0.2	±0.3	±0.5
Rough	±0.15	±0.2	±0.3	±0.5	±1.2

**ASTRAtch**  
member of ASTRA

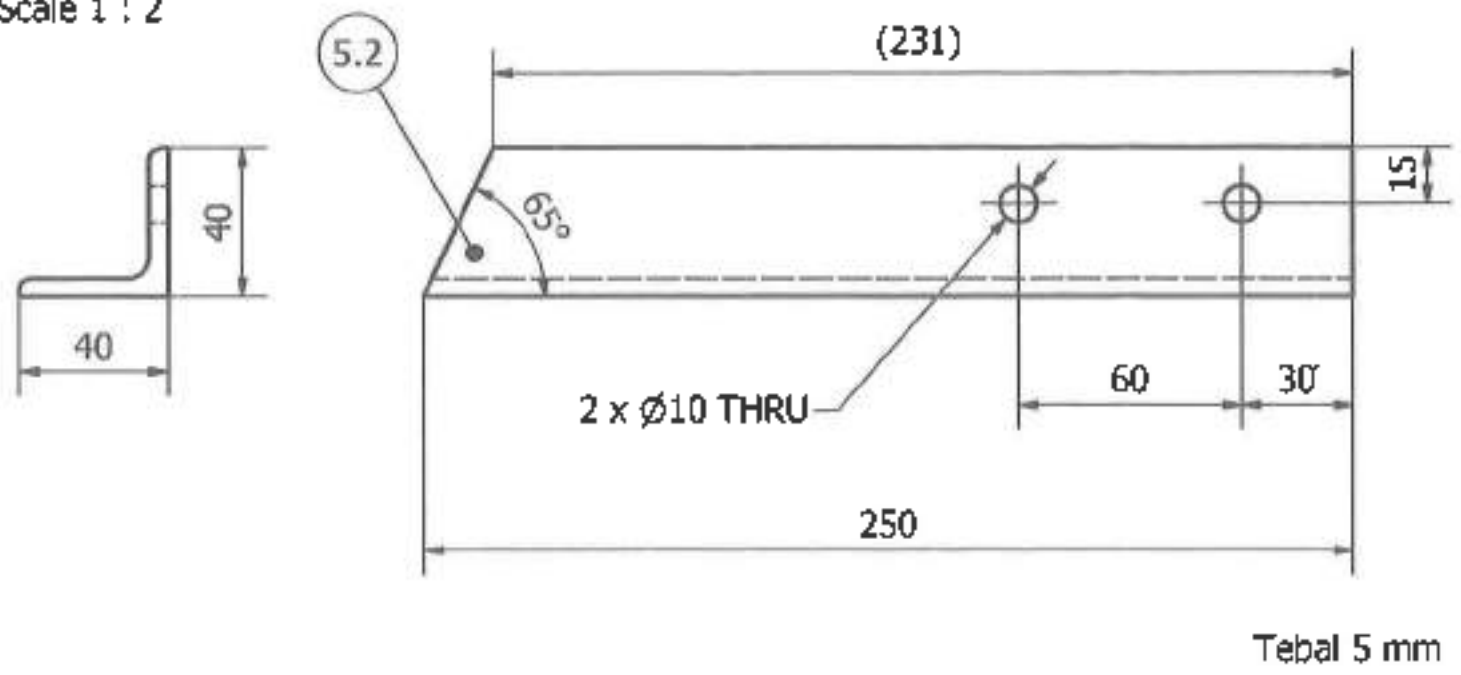
**Barrier**  
Trailer Jetski

Assy no. **23-P02-TJ-GA-00** DWG no. **23-P02-TJ-SA-04**

No order : Deburred all sharp edge 0.3

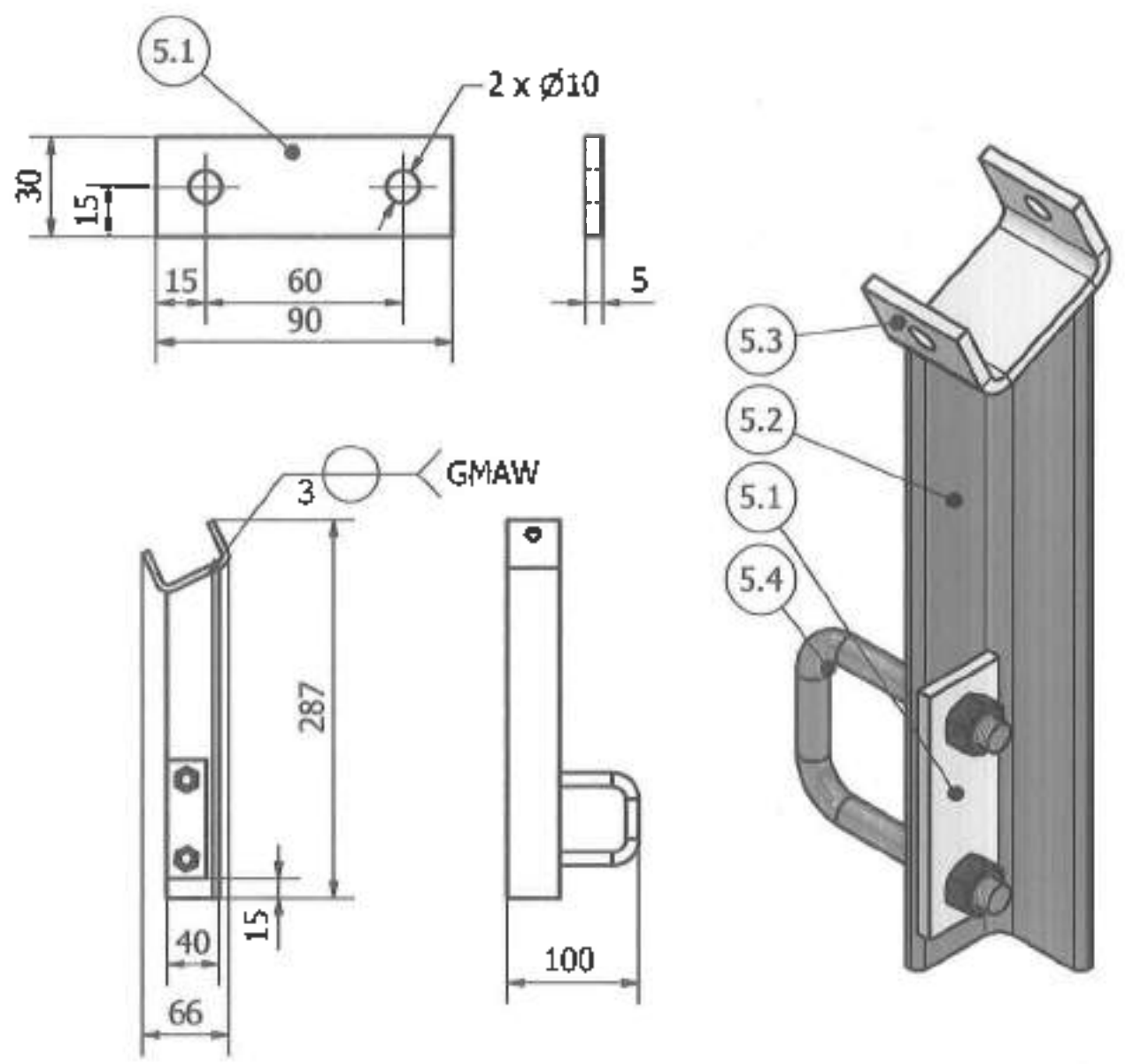
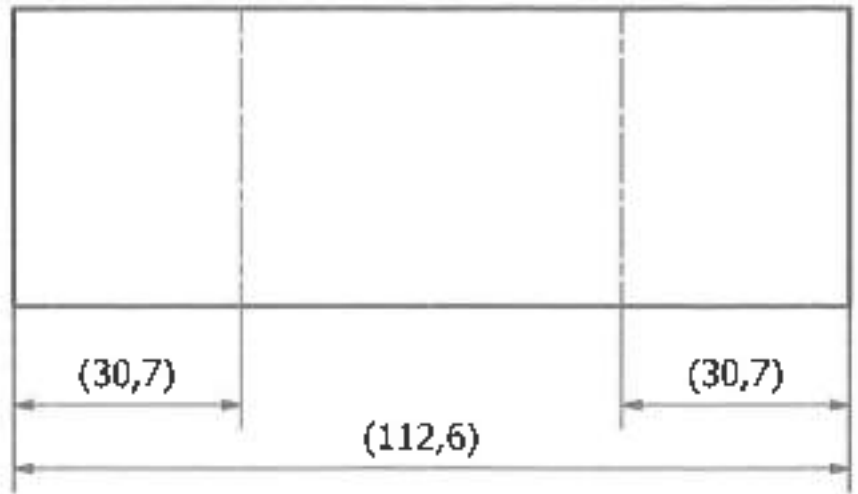
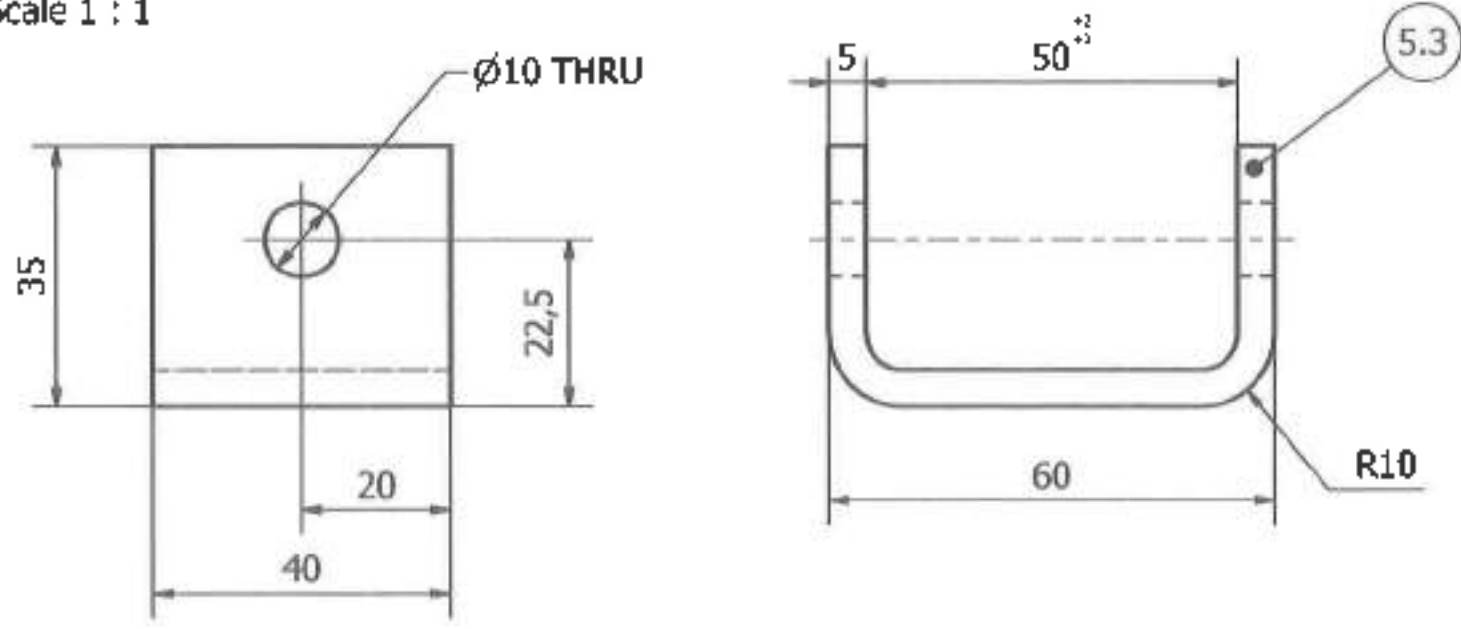
Origin : **A3**

Scale 1 : 2



Tebal 5 mm

Scale 1 : 1



5.4	JIS G 3466 75x45x3-170	Steel Mild	M10x85x70	1	
5.3	Grip	Sheet Metal 5mm	50x35x40	1	
5.2	Frame L	Siku Galvanis 40x40x3	250x40x40	1	R&L
5.1	Bracket S	Sheet Metal 5mm	90x30x5	1	
5	Bracket Roller		95x66x285	4	
No	Description	Material	Dimension	Qty	Remark

Scale	1:2	Hard	Roughness	Checked	Approved					
Finish	Welding			Yul	Herry					
Tolerance	Middle	HRc	Proj. Amerika	Designed	Drawn					
No	Revisi	Date	Sign	Peter	Tahyhu					
ACCUR	0.5 - 3	3 - 4	5 - 10	11 - 15	16 - 20	21 - 25	26 - 30	31 - 35	36 - 40	41 - 50
Fine	±0.05	±0.05	±0.1	±0.15	±0.2	±0.3	±0.5			
Middle	±0.1	±0.1	±0.2	±0.3	±0.5	±0.6	±1.2			
Normal	±0.2	±0.2	±0.5	±0.6	±1.2	±2	±3			

**ASTRAtech**  
member of ASTRA

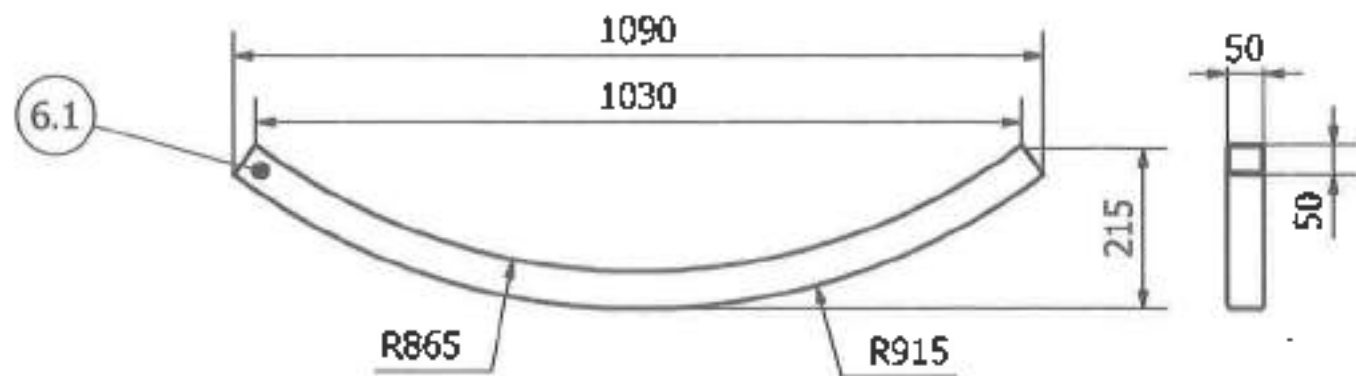
**Bracket Roller**  
Trailer Jetski

Asby no. 23-P02-TJ-GA-00  
Orig no. 23-P02-TJ-SA-05

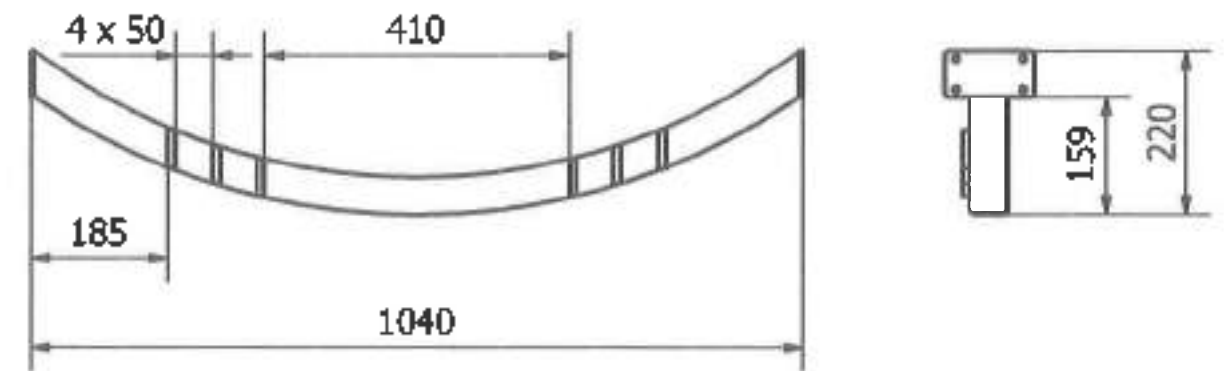
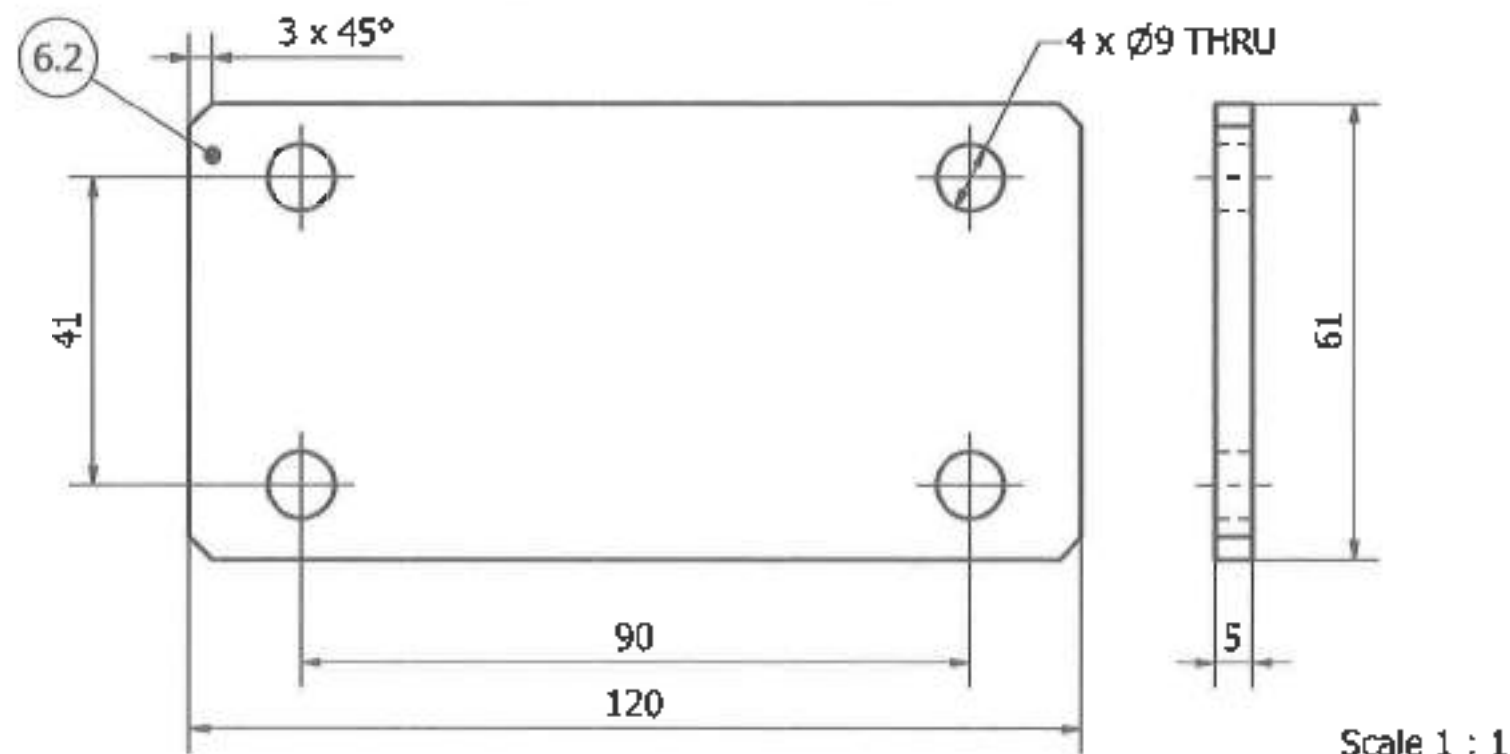
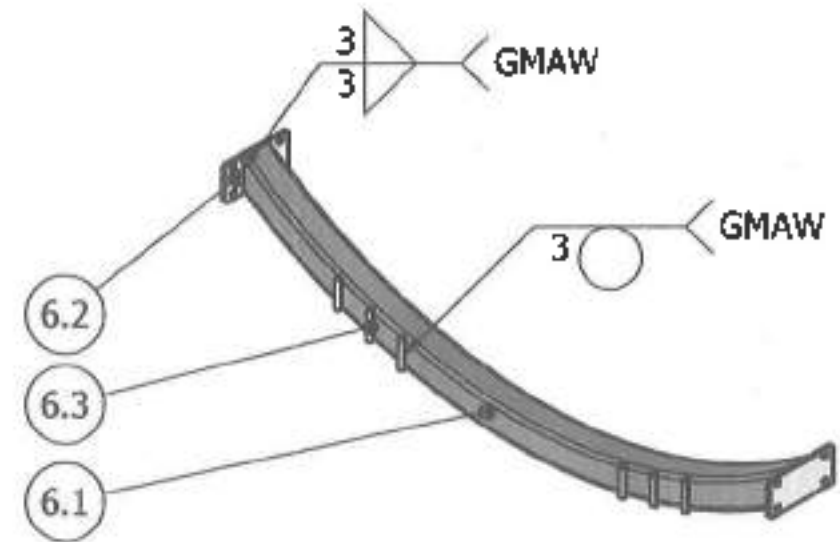
No order :  
Deburred all sharp edge 0.3

1 of 1

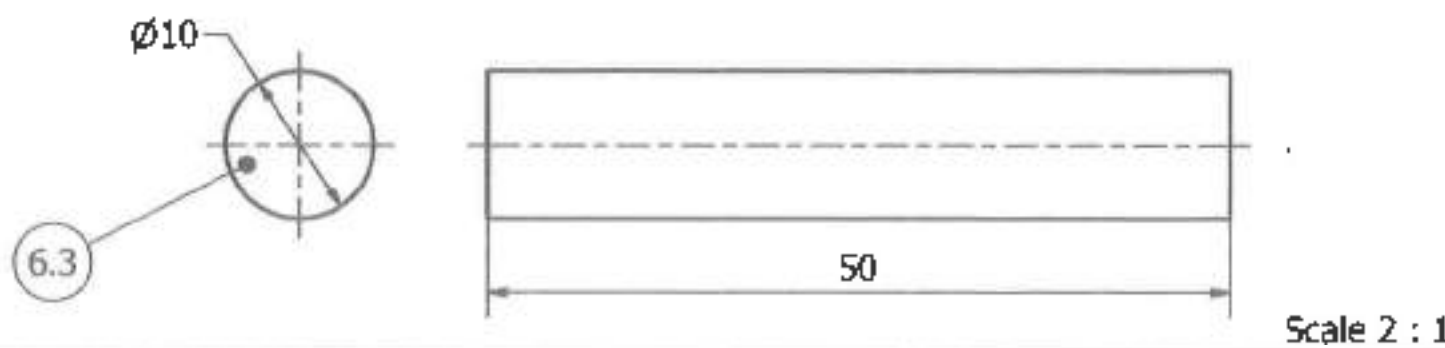
Benda Bendingan



Bentangan



6.3	Stopper	Behel Galvanis	Ø10x50	6	
6.2	Support Plate	Sheet Metal 5mm	120x61x5	4	
6.1	Frame Base	Hollow Galvanis 50x50x3	50x50x1132	2	
6	Under Frame		1040x120x220	2	
No	Description	Material	Dimension	Qty	Remark



Scale	1 : 10	Hard	Roughness	Checked	Approved		
Finish	Welding	MRC	(✓)✓	Yuni	Herry		
Tolerance	Middle		Proj. Amerika	Designed	Drawn		
No.	Revisi	Date	Sign	Peter	Wahyu		
Accur	0.5-3	3-6	6-30	30-120	120-500	500-1000	1000-2000
Fine	±0.05	±0.05	±0.1	±0.15	±0.2	±0.3	±0.5
Middle	±0.1	±0.1	±0.2	±0.3	±0.5	±0.8	±1.2
Rough	±0.15	±0.2	±0.5	±0.8	±1.2	±2	±3

**ASTRAtech**  
member of ASTRA

**Under Frame**  
Trailer Jetski

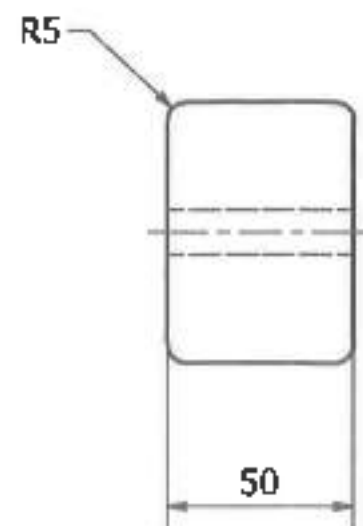
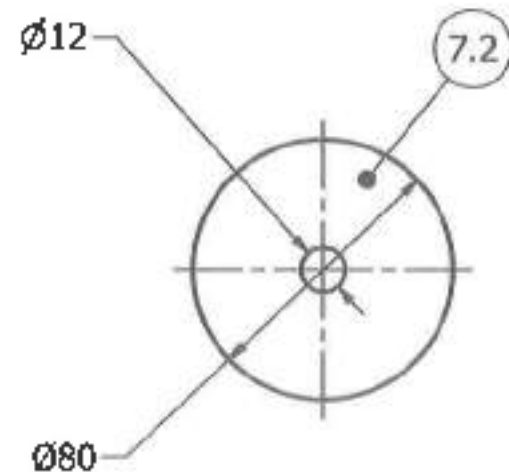
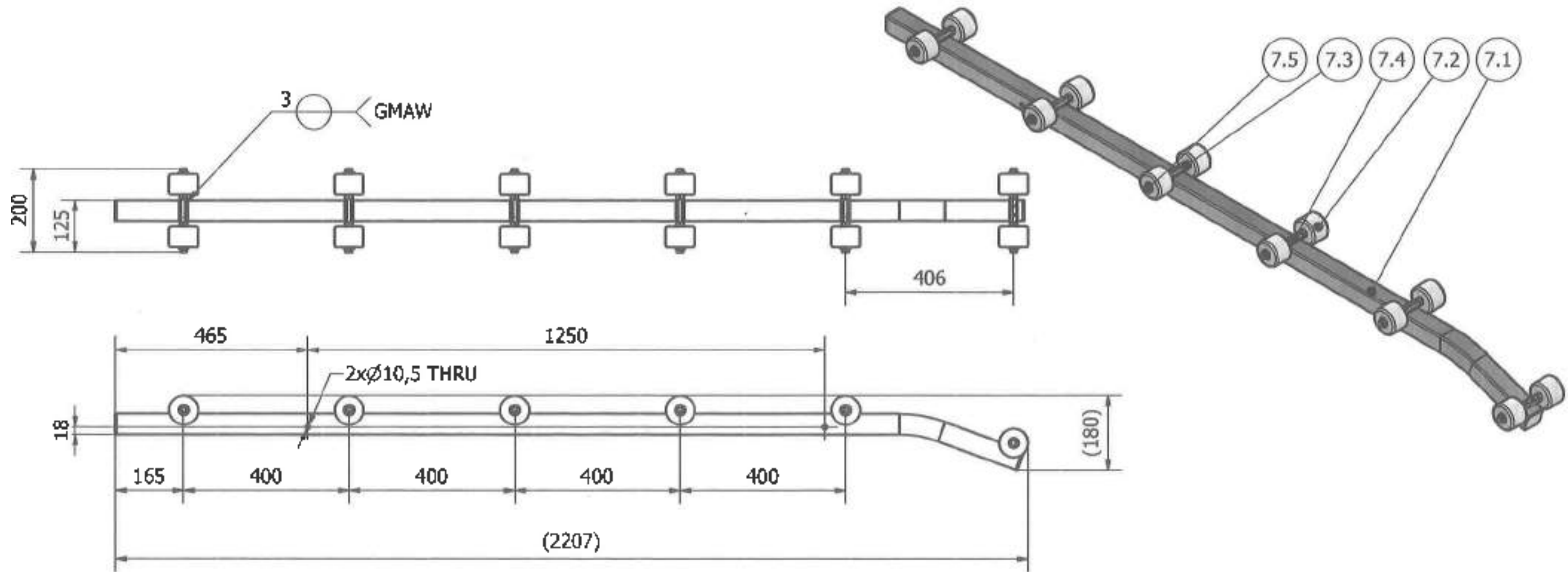
Assy no. **23-P02-TJ-GA-00**      Dwg no. **23-P02-TJ-SA-06**

No order:      Origin:      **A3**

Deburred all sharp edge 0.3

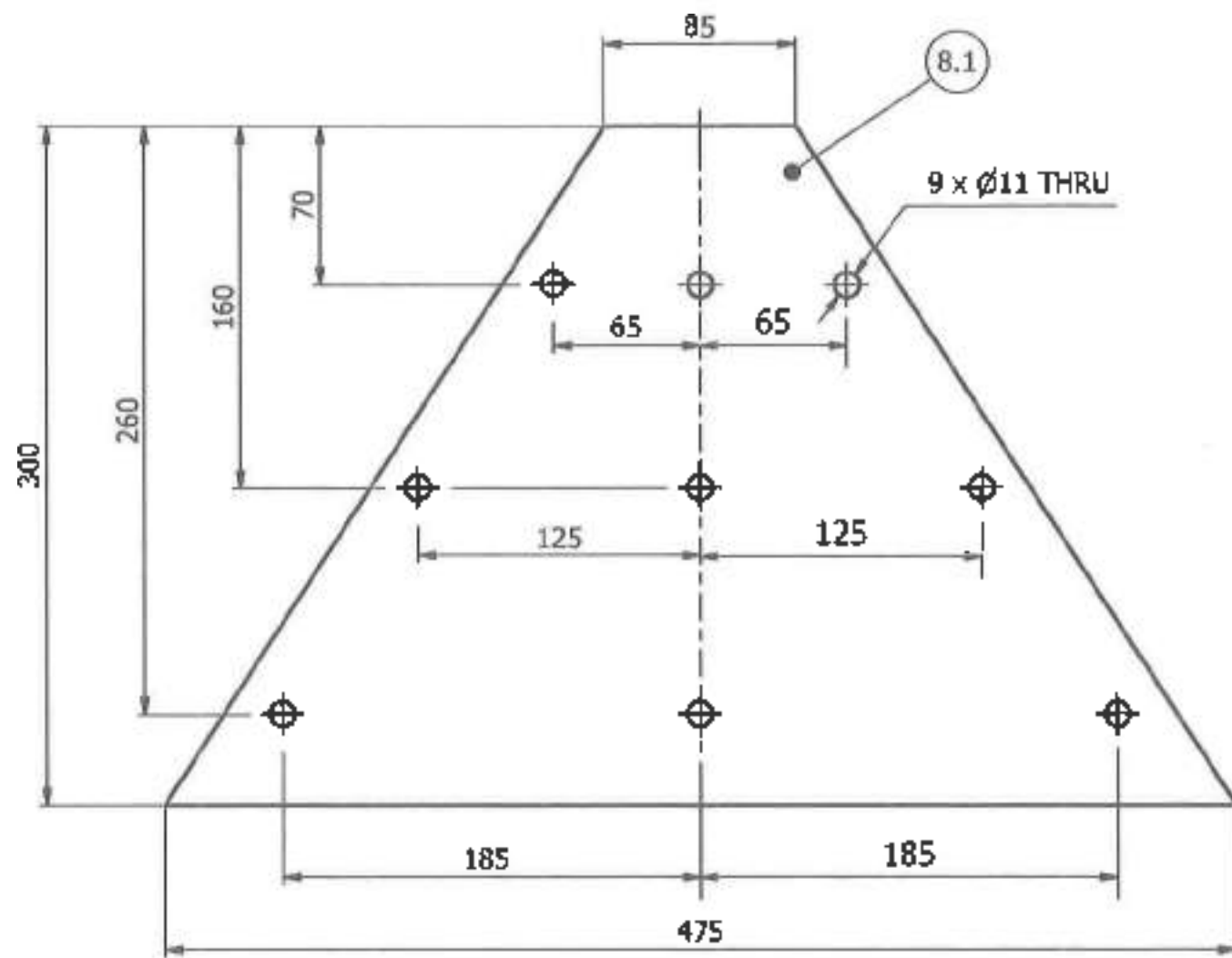
File name: c:\p02\TJ\TRAILOR\p02\TJ-SA-06\Drawn\Herry.dwg



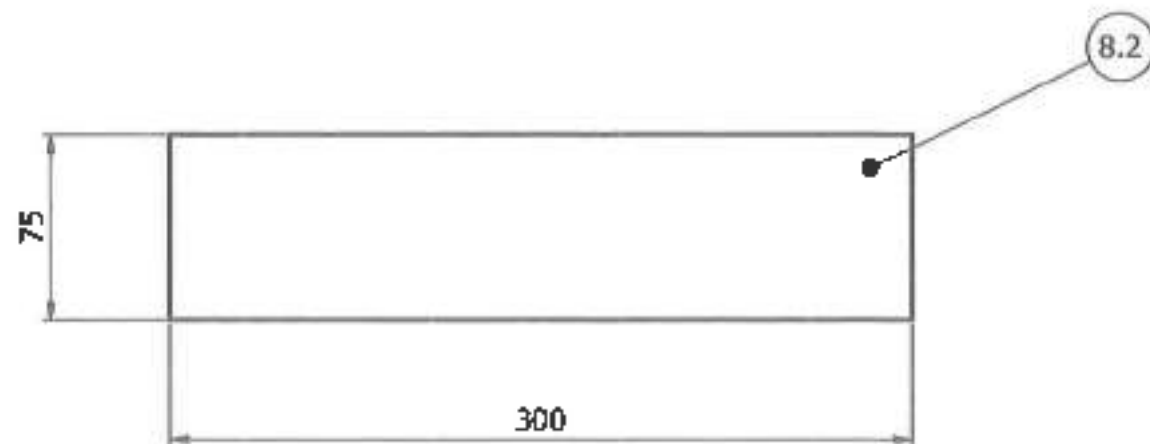
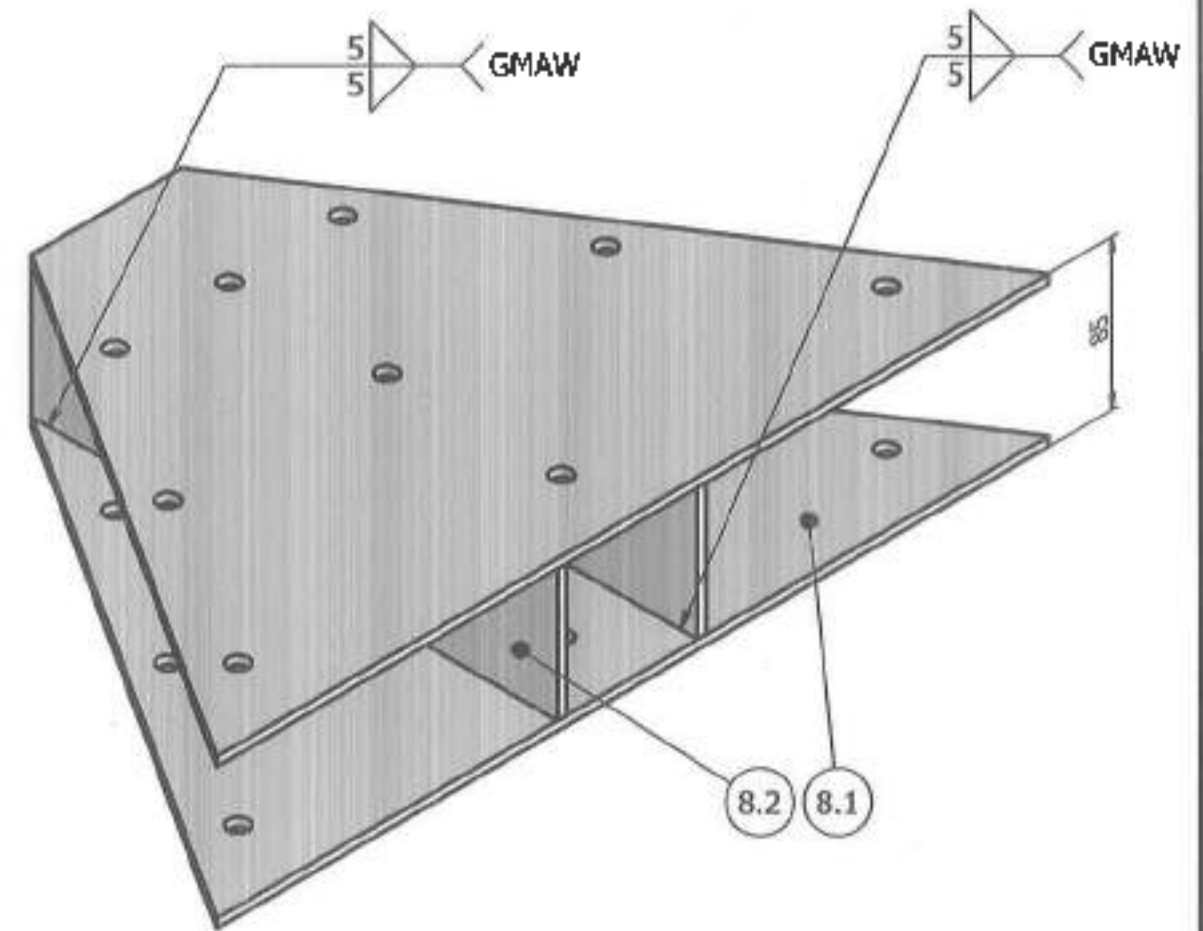


Scale 1 : 2

7.5	DIN EN ISO 4018 M12	Bold M12	M12x80	24		
7.4	ISO 4034 M12	Long Nut M12	M12x55	12		
7.3	DIN 1479 M12	Nut M12	M12	12		
7.2	Roller	Polyuretane	Ø80x50	24		
7.1	Frame Base Roller	Hollow Galvanis 50x50x3	50x50x2190	2		
7	Frame Roller		2207x200x406	2		
No	Description	Material	Dimension	Qty	Remark	
Scale 1:10		Hard	Roughness	Checked	Approved	
Finish Welding		HRc	(✓)✓	Yuni	Herry	
Tolerance midlife		Proj. Amerika	⊕	Designed	Drawn	
No.	Revisi	Date	Sign	Peter	Wahyu	
Accur	0.1-1	1-4	5-10	10-20	25-50	50-100
Fine	±0.05	±0.06	±0.1	±0.15	±0.2	±0.3
Middle	±0.1	±0.1	±0.2	±0.3	±0.5	±0.8
Rough	±0.15	±0.2	±0.5	±0.8	±1.2	±3
File name : D:\PROJECT TRILER\PROJECT TRILER\Frame Roller V1.dwg		Title: <b>ASTRAtech</b> member of ASTRA		Frame Roller		
		Trailer Jetski		Assy no. 23-P02-TJ-GA-00		
				Dwg no. 23-P02-TJ-SA-07		
				No order :		
				Origin :		
				Deburred all sharp edge 0.3		
				A3		
				1 of 1		



Tebal Plat 5 mm



Tebal Plat 5 mm

8.2	Plate center	Sheet Metal 5mm	300x75x5	2			
8.1	Plate upper & lower	Sheet Metal 5mm	475x300x5	2			
8	Rectangular Frame		475x300x85	1			
No	Description	Material	Dimension	Qty	Remark		
Scale	1 : 2	Hard	Roughness	Checked	Approved		
Finish	Welding			Yuhl	Herry		
Tolerance	Middle	HRC	(✓)✓	Designed	Drawn		
			Proj. Amerika	Peter	Wahyu		
No.	Revisi	Date	Sign				
ACAP	0.5 - 3	7 - 4	6 - 20	10 - 120	120 - 215	215 - 1800	1800 - 1800
Fine	±0.25	±0.05	±0.1	±0.15	±0.2	±0.3	±0.5
Middle	±0.3	±0.1	±0.2	±0.3	±0.6	±0.8	±1.2
Rough	±0.15	±0.2	±0.5	±0.8	±1.2	±2	±3
File name : D:\PROJECT 2018\PROJECT 2018\plan.dwg		Assy no. 23-P02-TJ-GA-00		Dwg no. 23-P02-TJ-SA-08			
		No order :		Origin :			
		Deburred all sharp edge 0.3		A3			
				1 of 1			

**ASTRA polytechnic**  
member of ASTRA

Rectangular Frame  
Trailer Jetski

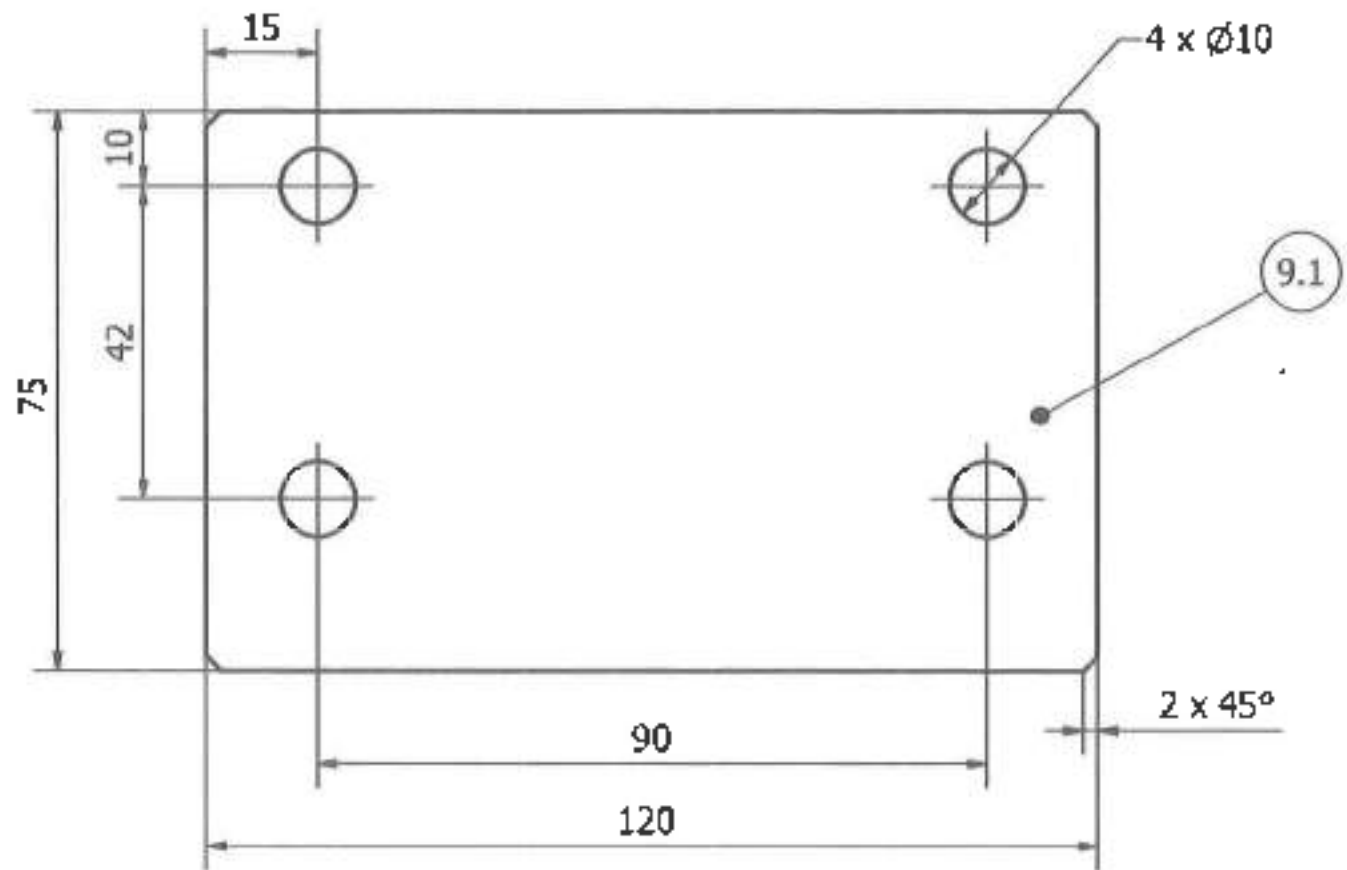
Assy no. 23-P02-TJ-GA-00  
Dwg no. 23-P02-TJ-SA-08

No order :  
Deburred all sharp edge 0.3

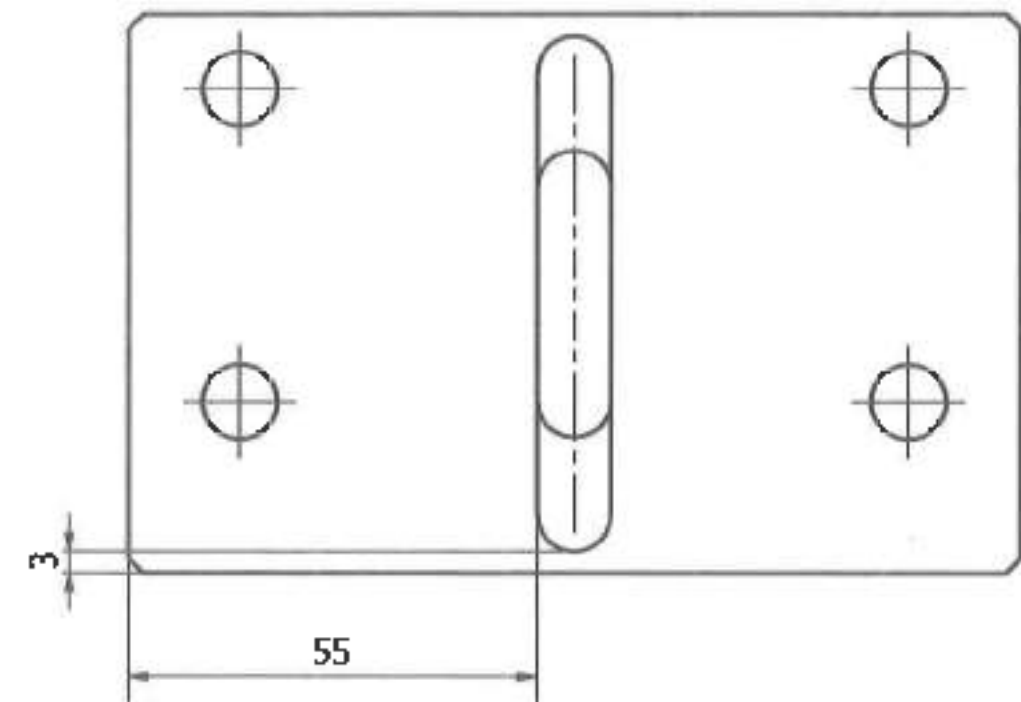
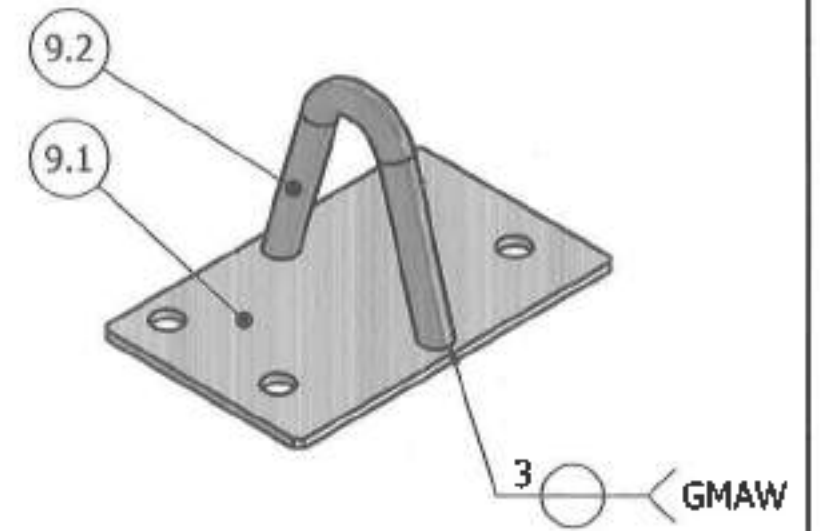
A3

1 of 1

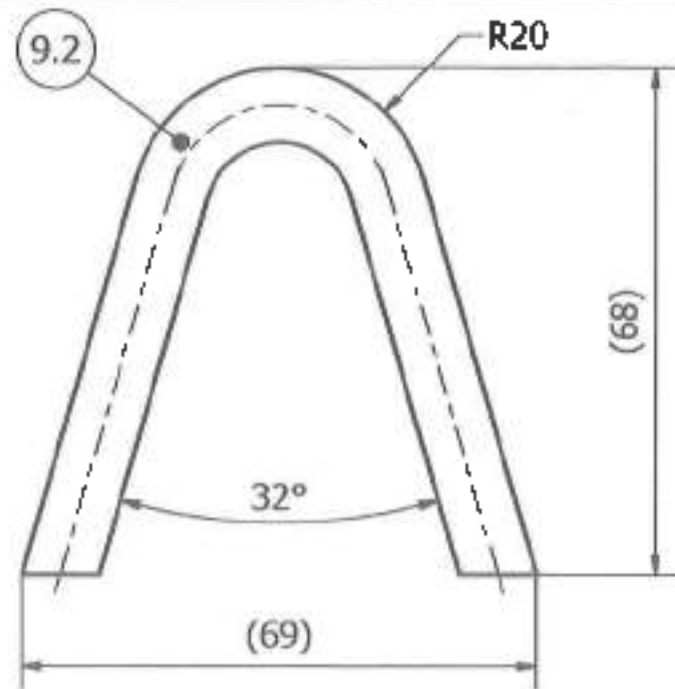




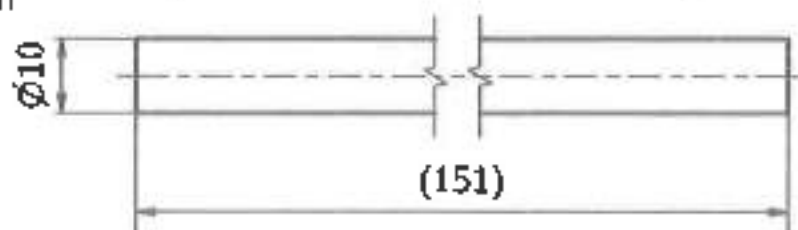
Tebal Plat 5mm



Benda Bendingan



Bentangan



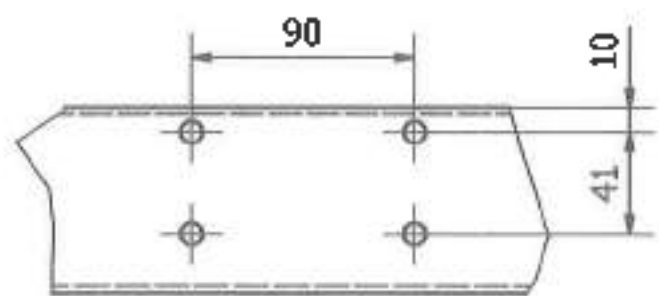
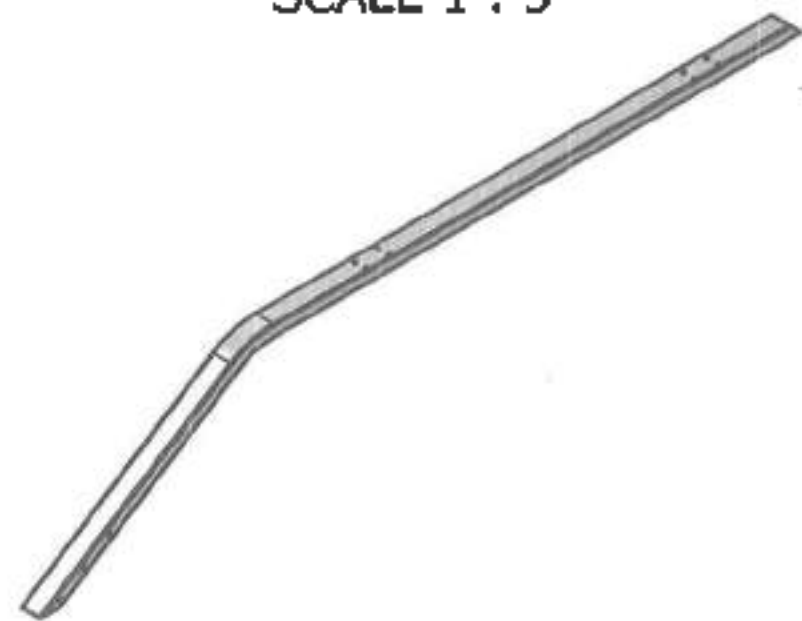
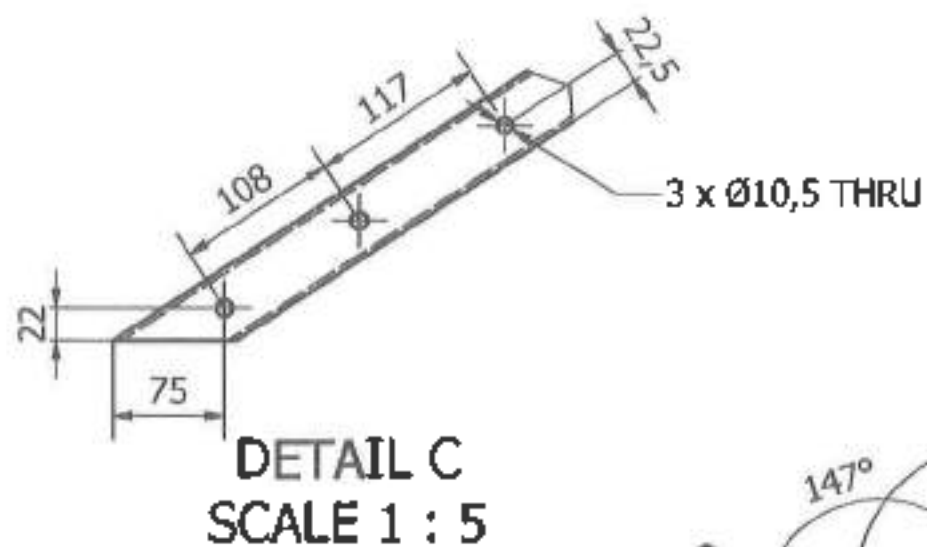
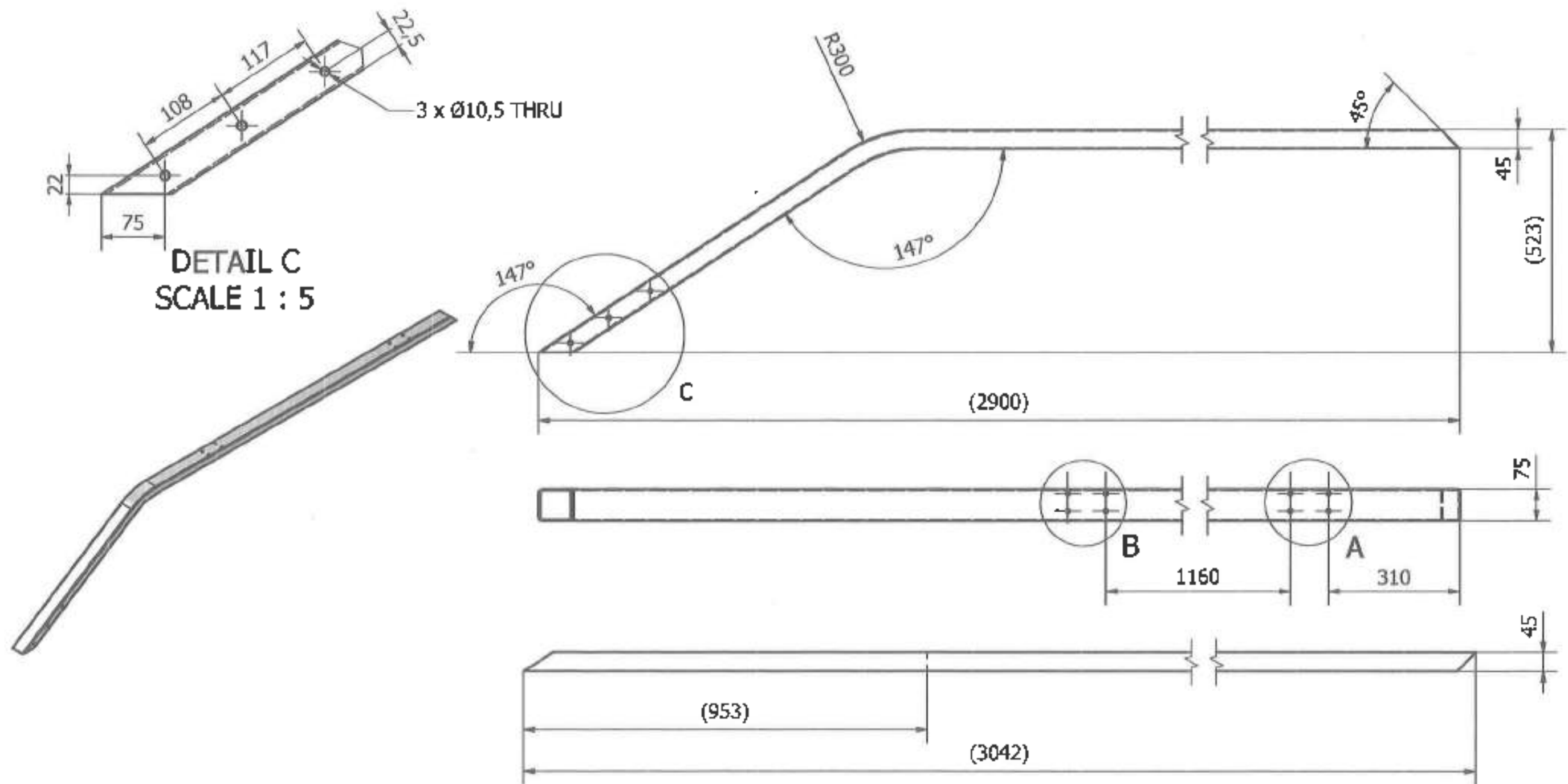
No	Description	Material	Dimension	Qty	Remark
9.1	Plat	Sheet Metal 5mm	120x75x5	4	
9.2	Ear	Behel Galvanis	Ø10x151	4	
9	Side Hasp		120x75x73	4	

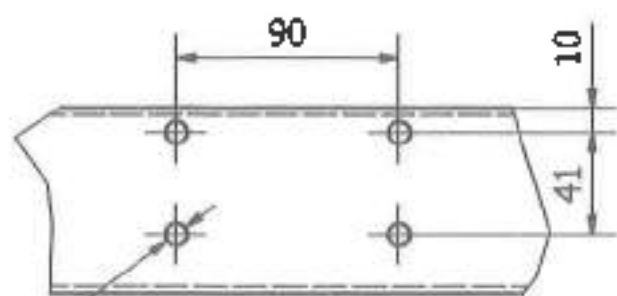
Scale	1:1	Hard	Roughness	Checked	Approved
Finish	Welding			Yuni	Herry
Tolerance	Middle	HRc	(✓)✓		
			Proj. Amerika	Designed	Drawing
No.	Revisi	Date	Sign		
ADDIT	0 5 -3	3 -4	6 - 30	Ø0-010	100-010
Fine	±0.05	±0.05	±0.1	±0.15	±0.2
Middle	±0.1	±0.1	±0.2	±0.3	±0.4
Rough	±0.15	±0.2	±0.3	±0.4	±0.5

<b>ASTRAtech</b> member of ASTRA	
<b>Side Hasp</b>	
Trailer Jetski	
Assy no.	Dwg no.
23-P02-TJ-GA-00	23-P02-TJ-SA-09
No order:	Origin:
Deburred all sharp edge 0.3	



DETAIL B  
SCALE 1 : 2



DETAIL A  
SCALE 1 : 2

8 x Ø9  
▽ All

Tebal Hollow 3 mm

No	Description	Material	Dimension	Qty	Remark
1.4	Side Frame	Hollow Galvanis	45x75x3042	2	

Scale	1:10	Hard	Roughness	Checked	Approved
Finish	Bending	HRC	(✓)✓	Yuni	Herry
Tolerance	Middle		Proj. Amerika	Designed	Drawn
No.	Revisi	Date	Sign		
Accur	0.5-3	3-6	6-30	30-120	120-315
Fine	±0.05	±0.05	±0.1	±0.15	±0.2
Middle	±0.1	±0.1	±0.2	±0.3	±0.5
Rough	±0.15	±0.2	±0.5	±0.8	±1.2
				±1.2	±1.7

<b>Side Frame</b> Main Frame	
Asy no.	Dwg no.
23-P02-TJ-SA-01	23-P02-TJ-PRT-04
No order	Origin
Orbured all sharp edge 0.3	A3